

HOWARD COUNTY HOUSING REPORT

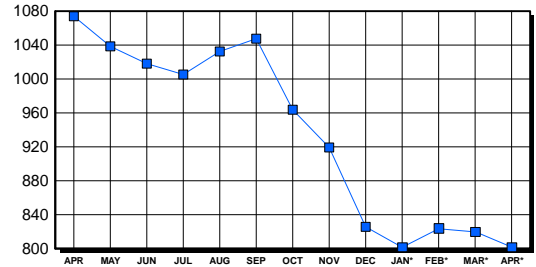
Residential Market Report Single Family Homes April 2000

LISTINGS

| Price Range | New This Month | | | Total Active | | |
|---------------------|----------------|------------|-------------|--------------|--------------|--------------|
| | 2000 | 1999 | % Change | 2000 | 1999 | % Change |
| 0-149999 | 140 | 148 | -5.4 | 238 | 383 | -37.9 |
| 150000-299999 | 208 | 251 | -17.1 | 272 | 420 | -35.2 |
| 300000-449999 | 79 | 74 | 6.8 | 190 | 219 | -13.2 |
| 450000-599999 | 22 | 13 | 69.2 | 55 | 49 | 12.2 |
| 600000-749999 | 3 | 9 | -66.7 | 23 | 13 | 76.9 |
| 750000-999999 | 4 | 2 | 100.0 | 16 | 10 | 60.0 |
| 1000000 & Over | 2 | 1 | 100.0 | 8 | 8 | 0.0 |
| Grand Total: | 458 | 498 | -8.0 | 802 | 1,102 | -27.2 |

INVENTORY TREND

Listings Active At End Of Month

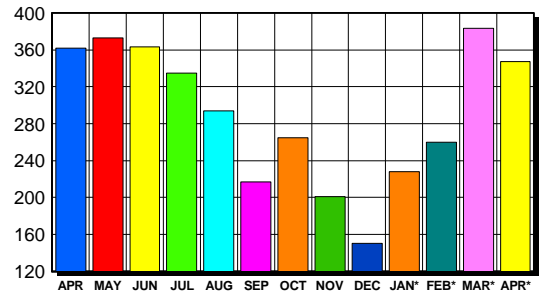


CONTRACTS

| Price Range | New This Month | | | Year-To-Date | | |
|---------------------|----------------|------------|-------------|--------------|--------------|-------------|
| | 2000 | 1999 | % Change | 2000 | 1999 | % Change |
| 0-149999 | 95 | 93 | 2.2 | 378 | 345 | 9.6 |
| 150000-299999 | 172 | 199 | -13.6 | 594 | 654 | -9.2 |
| 300000-449999 | 70 | 62 | 12.9 | 196 | 191 | 2.6 |
| 450000-599999 | 9 | 6 | 50.0 | 33 | 23 | 43.5 |
| 600000-749999 | 0 | 2 | -200.0 | 8 | 8 | 0.0 |
| 750000-999999 | 1 | 0 | 100.0 | 7 | 4 | 75.0 |
| 1000000 & Over | 0 | 0 | 0.0 | 2 | 2 | 0.0 |
| Grand Total: | 347 | 362 | -4.1 | 1,218 | 1,227 | -0.7 |

SALES TREND

Contracts Ratified Per Month



SETTLEMENTS

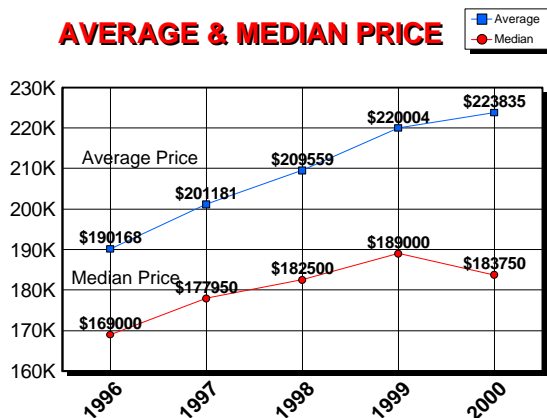
| Price Range | New This Month | | | Year-To-Date | | |
|---------------------|----------------|------------|--------------|--------------|------------|-------------|
| | 2000 | 1999 | % Change | 2000 | 1999 | % Change |
| 0-149999 | 96 | 89 | 7.9 | 294 | 299 | -1.7 |
| 150000-299999 | 117 | 156 | -25.0 | 409 | 503 | -18.7 |
| 300000-449999 | 31 | 36 | -13.9 | 129 | 132 | -2.3 |
| 450000-599999 | 7 | 7 | 0.0 | 27 | 17 | 58.8 |
| 600000-749999 | 2 | 2 | 0.0 | 7 | 5 | 40.0 |
| 750000-999999 | 1 | 1 | 0.0 | 4 | 1 | 300.0 |
| 1000000 & Over | 1 | 1 | 0.0 | 2 | 1 | 100.0 |
| Grand Total: | 255 | 292 | -12.7 | 872 | 958 | -9.0 |

DATA SOURCE

Metropolitan Regional Information System (MRIS)

NOTES: Properties not listed through this Multiple Listing Service are not reflected. The term "sales" represents ratified purchase contracts. Current year information is preliminary and subject to revision. Current year- to- date contract information may not equal the sum of the monthly contract totals reported in previous issues. Prices are not adjusted for inflation.

AVERAGE & MEDIAN PRICE



MARKET BY PRICE RANGE

