

# HOWARD COUNTY

## Residential Market Report

# HOUSING REPORT

## CONDO & COOPS

### November 2007

### LISTINGS

Price Range	New This Month			Total Actives		
	2007	2006	% Change	2007	2006	% Change
0 - 149,999	0	0	0.0	1	0	0.0
150,000 - 199,999	5	17	-70.6	30	28	7.1
200,000 - 299,999	36	38	-5.3	111	90	23.3
300,000 - 399,999	21	14	50.0	67	61	9.8
400,000 - 499,999	6	7	-14.3	27	29	-6.9
500,000 - 599,999	5	0	500.0	29	23	26.1
600,000 - 699,999	0	0	0.0	3	8	-62.5
700,000 - 799,999	0	0	0.0	1	0	0.0
800,000 - 899,999	0	0	0.0	1	2	-50.0
900,000 - 999,999	0	0	0.0	0	0	0.0
1,000,000 - 1,249,999	0	0	0.0	0	0	0.0
1,250,000 - 1,499,999	0	0	0.0	0	0	0.0
1,500,000 +	0	0	0.0	0	0	0.0
<b>TOTALS</b>	<b>73</b>	<b>76</b>	<b>-3.9</b>	<b>270</b>	<b>241</b>	<b>12.0</b>

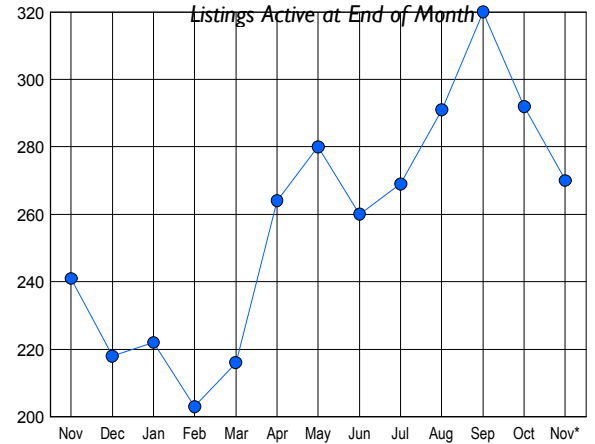
### CONTRACTS

Price Range	New This Month			Year-To-Date		
	2007	2006	% Change	2007	2006	% Change
0 - 149,999	1	1	0.0	6	9	-33.3
150,000 - 199,999	5	8	-37.5	77	106	-27.4
200,000 - 299,999	19	29	-34.5	344	406	-15.3
300,000 - 399,999	8	11	-27.3	145	124	16.9
400,000 - 499,999	2	2	0.0	42	30	40.0
500,000 - 599,999	2	0	200.0	25	32	-21.9
600,000 - 699,999	1	1	0.0	6	5	20.0
700,000 - 799,999	0	0	0.0	0	0	0.0
800,000 - 899,999	0	0	0.0	1	0	100.0
900,000 - 999,999	0	0	0.0	0	0	0.0
1,000,000 - 1,249,999	0	0	0.0	0	0	0.0
1,250,000 - 1,499,999	0	0	0.0	0	0	0.0
1,500,000 +	0	0	0.0	0	0	0.0
<b>TOTALS</b>	<b>38</b>	<b>52</b>	<b>-26.9</b>	<b>646</b>	<b>712</b>	<b>-9.3</b>

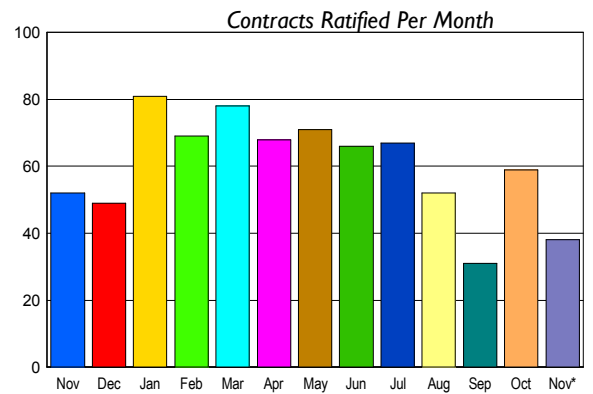
### SETTLEMENTS

Price Range	New This Month			Year-To-Date		
	2007	2006	% Change	2007	2006	% Change
0 - 149,999	1	1	0.0	6	8	-25.0
150,000 - 199,999	5	9	-44.4	81	107	-24.3
200,000 - 299,999	20	30	-33.3	342	391	-12.5
300,000 - 399,999	12	12	0.0	142	118	20.3
400,000 - 499,999	3	4	-25.0	42	33	27.3
500,000 - 599,999	1	2	-50.0	17	25	-32.0
600,000 - 699,999	1	0	100.0	7	3	133.3
700,000 - 799,999	0	0	0.0	3	0	-300.0
800,000 - 899,999	0	0	0.0	1	0	-100.0
900,000 - 999,999	0	0	0.0	0	0	0.0
1,000,000 - 1,249,999	0	0	0.0	0	0	0.0
1,250,000 - 1,499,999	0	0	0.0	0	0	0.0
1,500,000 +	0	0	0.0	0	0	0.0
<b>TOTALS</b>	<b>43</b>	<b>58</b>	<b>-25.9</b>	<b>641</b>	<b>685</b>	<b>-6.4</b>

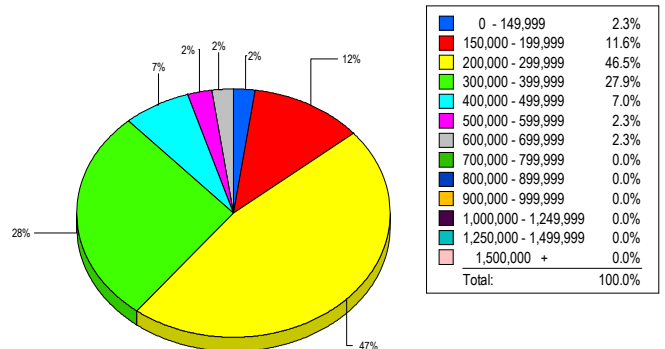
### INVENTORY TREND



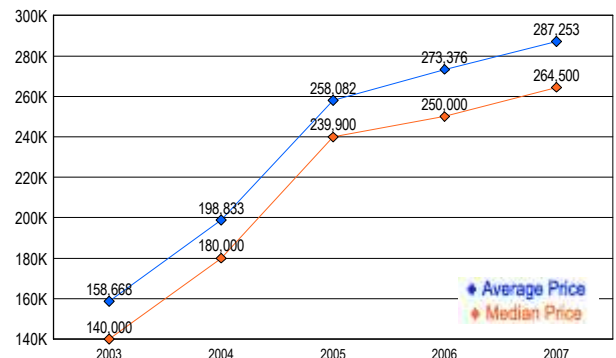
### SALES TREND



### MARKET BY PRICE RANGE



### AVERAGE & MEDIAN PRICE



DATA SOURCE: Metropolitan Regional Information Systems, Inc. (MRIS)

NOTES: Properties not listed through this Multiple Listing Service are not reflected. The term "sales" represents ratified purchase contracts. Current year information is preliminary and subject to revision. Current year-to-date contract information may not equal the sum of the monthly contract totals reported in