

HOWARD COUNTY Residential Market Report

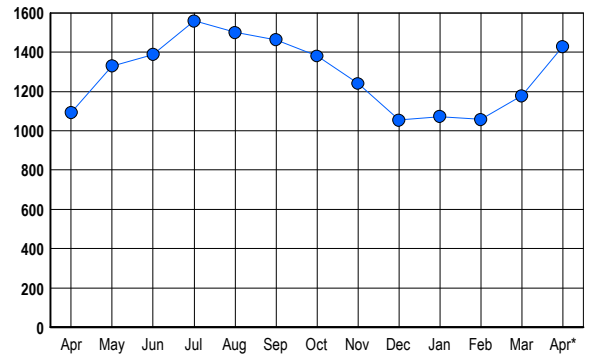
HOUSING REPORT Single Family Homes April 2007

LISTINGS

Prices Range	New This Month			Total Actives		
	2007	2006	% Change	2007	2006	% Change
0 - 149,999	1	0	100.0	1	0	100.0
150,000 - 199,999	0	0	0.0	0	0	0.0
200,000 - 299,999	39	34	14.7	57	31	83.9
300,000 - 399,999	169	197	-14.2	299	248	20.6
400,000 - 499,999	110	108	1.9	225	161	39.8
500,000 - 599,999	82	100	-18.0	204	164	24.4
600,000 - 699,999	72	90	-20.0	170	142	19.7
700,000 - 799,999	47	73	-35.6	132	104	26.9
800,000 - 899,999	27	37	-27.0	86	69	24.6
900,000 - 999,999	16	11	45.5	48	42	14.3
1,000,000 - 1,249,999	12	22	-45.5	54	52	3.8
1,250,000 - 1,499,999	39	9	333.3	90	53	69.8
1,500,000 +	27	13	107.7	63	26	142.3
TOTALS	641	694	-7.6	1429	1092	30.9

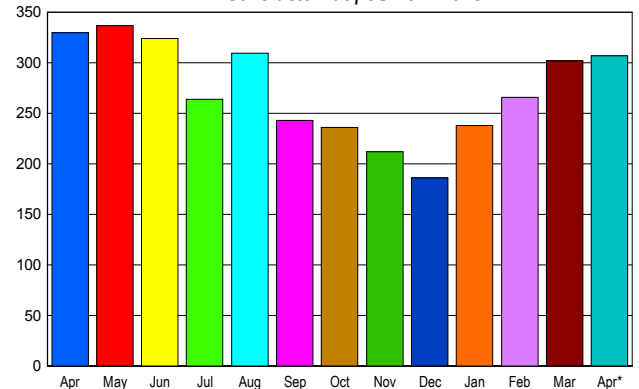
INVENTORY TREND

Listings Active at End of Month



SALES TREND

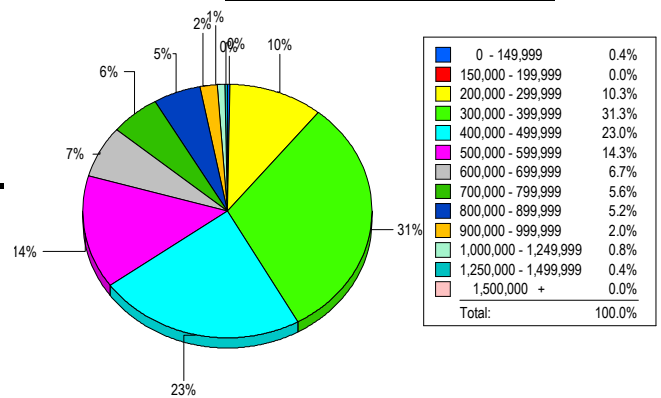
Contracts Ratified Per Month



CONTRACTS

Price Range	New This Month			Year-To-Date		
	2007	2006	% Change	2007	2006	% Change
0 - 149,999	0	1	-100.0	1	3	-66.7
150,000 - 199,999	1	0	100.0	7	3	133.3
200,000 - 299,999	31	32	-3.1	105	121	-13.2
300,000 - 399,999	85	112	-24.1	325	370	-12.2
400,000 - 499,999	71	65	9.2	221	208	6.3
500,000 - 599,999	45	42	7.1	155	149	4.0
600,000 - 699,999	33	38	-13.2	112	106	5.7
700,000 - 799,999	17	17	0.0	63	74	-14.9
800,000 - 899,999	9	9	0.0	32	38	-15.8
900,000 - 999,999	5	2	150.0	15	6	150.0
1,000,000 - 1,249,999	5	7	-28.6	20	25	-20.0
1,250,000 - 1,499,999	5	3	66.7	12	11	9.1
1,500,000 +	0	2	-100.0	6	11	-45.5
TOTALS	307	330	-7.0	1074	1125	-4.5

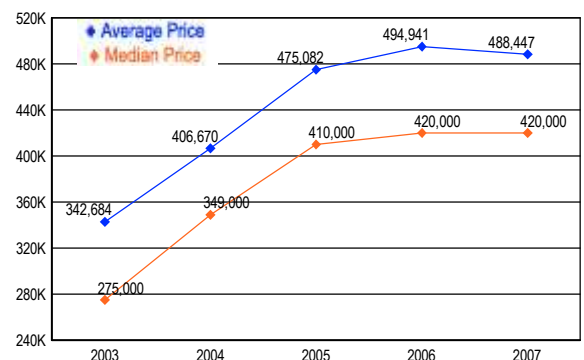
MARKET BY PRICE RANGE



SETTLEMENTS

Price Range	New This Month			Year-to-Date		
	2007	2006	% Change	2007	2006	% Change
0 - 149,999	1	0	100.0	2	4	-50.0
150,000 - 199,999	0	0	0.0	8	3	166.7
200,000 - 299,999	26	22	18.2	93	110	-15.5
300,000 - 399,999	79	88	-10.2	295	309	-4.5
400,000 - 499,999	58	34	70.6	157	152	3.3
500,000 - 599,999	36	34	5.9	124	129	-3.9
600,000 - 699,999	17	16	6.3	86	76	13.2
700,000 - 799,999	14	18	-22.2	46	58	-20.7
800,000 - 899,999	13	8	62.5	31	19	63.2
900,000 - 999,999	5	2	150.0	12	5	140.0
1,000,000 - 1,249,999	2	3	-33.3	15	17	-11.8
1,250,000 - 1,499,999	1	0	100.0	5	7	-28.6
1,500,000 +	0	3	-100.0	5	8	-37.5
TOTALS	252	228	10.5	879	897	-2.0

AVERAGE & MEDIAN PRICE



DATA SOURCE: Metropolitan Regional Information Systems, Inc. (MRIS)

NOTES: Properties not listed through this Multiple Listing Service are not reflected. The term "sales" represents ratified purchase contracts. Current year information is preliminary and subject to revision. Current year-to-date contract information may not equal the sum of the monthly contract totals reported in