

# HOWARD COUNTY

## Residential Market Report

# HOUSING REPORT

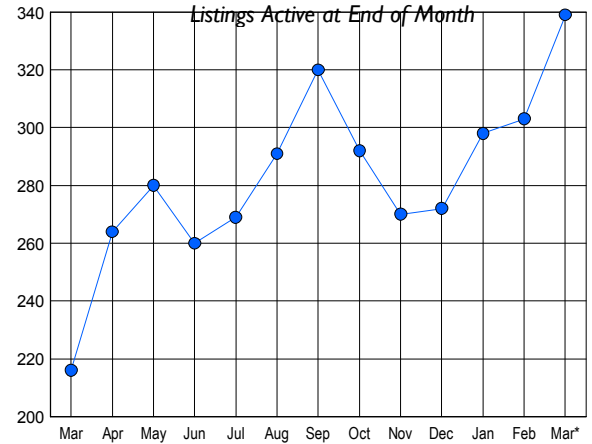
## CONDO & COOPS

### March 2008

### LISTINGS

Price Range	New This Month			Total Actives		
	2008	2007	% Change	2008	2007	% Change
0 - 149,999	1	0	100.0	3	0	0.0
150,000 - 199,999	17	8	112.5	47	11	327.3
200,000 - 299,999	42	63	-33.3	143	72	98.6
300,000 - 399,999	21	33	-36.4	66	57	15.8
400,000 - 499,999	12	10	20.0	40	34	17.6
500,000 - 599,999	6	9	-33.3	33	39	-15.4
600,000 - 699,999	0	1	-100.0	5	2	150.0
700,000 - 799,999	0	0	0.0	0	0	0.0
800,000 - 899,999	0	0	0.0	2	1	100.0
900,000 - 999,999	0	0	0.0	0	0	0.0
1,000,000 - 1,249,999	0	0	0.0	0	0	0.0
1,250,000 - 1,499,999	0	0	0.0	0	0	0.0
1,500,000 +	0	0	0.0	0	0	0.0
<b>TOTALS</b>	<b>99</b>	<b>124</b>	<b>-20.2</b>	<b>339</b>	<b>216</b>	<b>56.9</b>

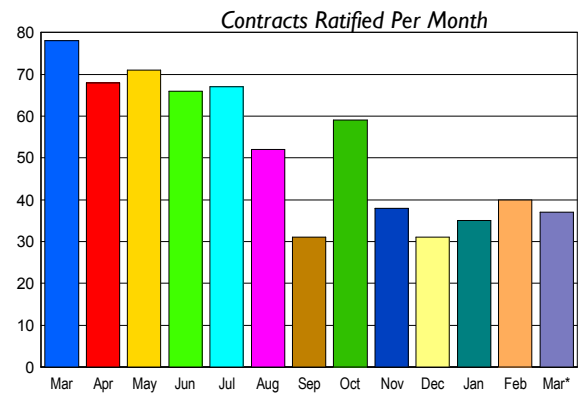
### INVENTORY TREND



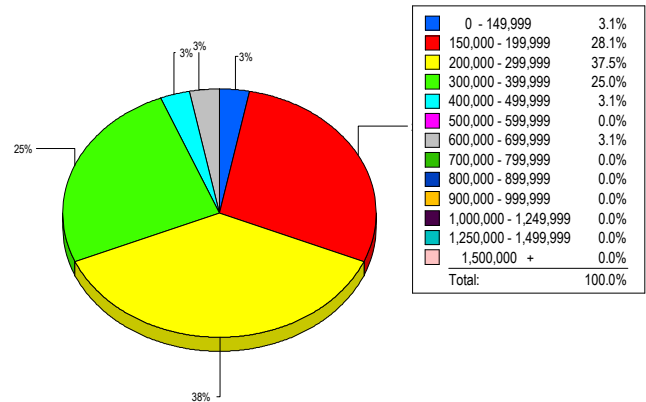
### CONTRACTS

Price Range	New This Month			Year-To-Date		
	2008	2007	% Change	2008	2007	% Change
0 - 149,999	1	0	100.0	1	1	0.0
150,000 - 199,999	7	10	-30.0	23	27	-14.8
200,000 - 299,999	15	45	-66.7	48	119	-59.7
300,000 - 399,999	7	17	-58.8	24	52	-53.8
400,000 - 499,999	7	4	75.0	15	11	36.4
500,000 - 599,999	0	1	-100.0	0	7	-100.0
600,000 - 699,999	0	1	-100.0	0	4	-100.0
700,000 - 799,999	0	0	0.0	0	0	0.0
800,000 - 899,999	0	0	0.0	0	0	0.0
900,000 - 999,999	0	0	0.0	0	0	0.0
1,000,000 - 1,249,999	0	0	0.0	0	0	0.0
1,250,000 - 1,499,999	0	0	0.0	0	0	0.0
1,500,000 +	0	0	0.0	0	0	0.0
<b>TOTALS</b>	<b>37</b>	<b>78</b>	<b>-52.6</b>	<b>111</b>	<b>221</b>	<b>-49.8</b>

### SALES TREND



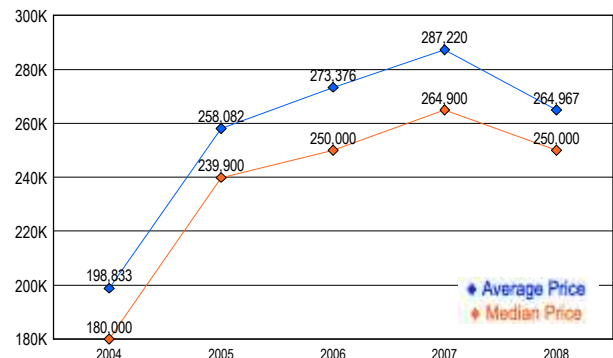
### MARKET BY PRICE RANGE



### SETTLEMENTS

Price Range	New This Month			Year-To-Date		
	2008	2007	% Change	2008	2007	% Change
0 - 149,999	1	0	100.0	2	1	100.0
150,000 - 199,999	9	11	-18.2	21	26	-19.2
200,000 - 299,999	12	32	-62.5	37	99	-62.6
300,000 - 399,999	8	19	-57.9	21	42	-50.0
400,000 - 499,999	1	2	-50.0	4	9	-55.6
500,000 - 599,999	0	2	-100.0	1	5	-80.0
600,000 - 699,999	1	0	100.0	1	2	-50.0
700,000 - 799,999	0	0	0.0	0	0	0.0
800,000 - 899,999	0	0	0.0	0	0	0.0
900,000 - 999,999	0	0	0.0	0	0	0.0
1,000,000 - 1,249,999	0	0	0.0	0	0	0.0
1,250,000 - 1,499,999	0	0	0.0	0	0	0.0
1,500,000 +	0	0	0.0	0	0	0.0
<b>TOTALS</b>	<b>32</b>	<b>66</b>	<b>-51.5</b>	<b>87</b>	<b>184</b>	<b>-52.7</b>

### AVERAGE & MEDIAN PRICE



DATA SOURCE: Metropolitan Regional Information Systems, Inc. (MRIS)

NOTES: Properties not listed through this Multiple Listing Service are not reflected. The term "sales" represents ratified purchase contracts. Current year information is preliminary and subject to revision. Current year-to-date contract information may not equal the sum of the monthly contract totals reported in