

HOWARD COUNTY

Residential Market Report

HOUSING REPORT

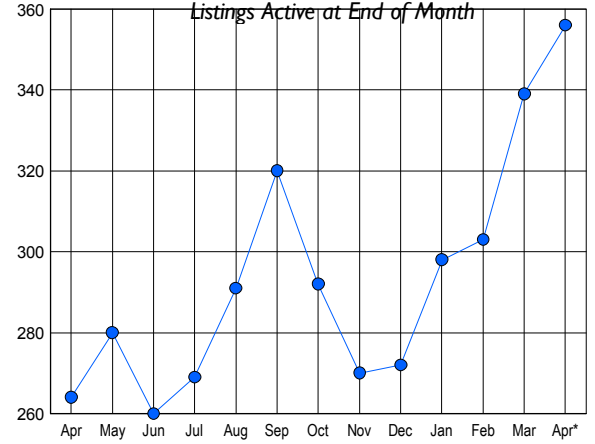
CONDO & COOPS

April 2008

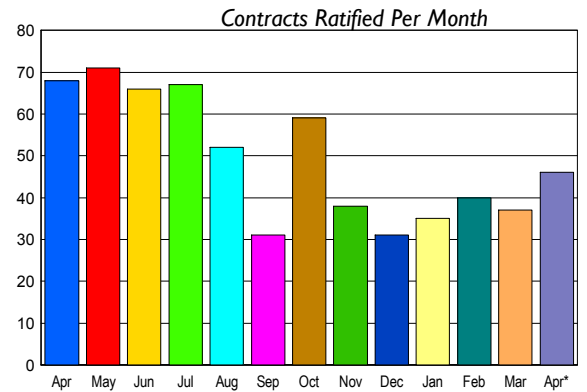
LISTINGS

Price Range	New This Month			Total Actives		
	2008	2007	% Change	2008	2007	% Change
0 - 149,999	1	0	100.0	8	2	300.0
150,000 - 199,999	11	9	22.2	43	12	258.3
200,000 - 299,999	57	56	1.8	160	96	66.7
300,000 - 399,999	22	33	-33.3	70	71	-1.4
400,000 - 499,999	7	14	-50.0	40	38	5.3
500,000 - 599,999	3	6	-50.0	28	40	-30.0
600,000 - 699,999	1	2	-50.0	4	4	0.0
700,000 - 799,999	1	0	100.0	2	0	0.0
800,000 - 899,999	0	0	0.0	1	1	0.0
900,000 - 999,999	0	0	0.0	0	0	0.0
1,000,000 - 1,249,999	0	0	0.0	0	0	0.0
1,250,000 - 1,499,999	0	0	0.0	0	0	0.0
1,500,000 +	0	0	0.0	0	0	0.0
TOTALS	103	120	-14.2	356	264	34.8

INVENTORY TREND



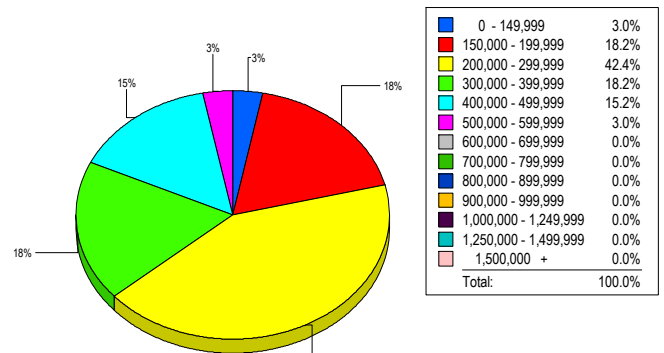
SALES TREND



CONTRACTS

Price Range	New This Month			Year-To-Date		
	2008	2007	% Change	2008	2007	% Change
0 - 149,999	0	0	0.0	1	1	0.0
150,000 - 199,999	5	6	-16.7	28	32	-12.5
200,000 - 299,999	23	38	-39.5	70	154	-54.5
300,000 - 399,999	9	14	-35.7	33	66	-50.0
400,000 - 499,999	6	8	-25.0	19	18	5.6
500,000 - 599,999	3	2	50.0	3	8	-62.5
600,000 - 699,999	0	0	0.0	0	4	-100.0
700,000 - 799,999	0	0	0.0	0	0	0.0
800,000 - 899,999	0	0	0.0	0	0	0.0
900,000 - 999,999	0	0	0.0	0	0	0.0
1,000,000 - 1,249,999	0	0	0.0	0	0	0.0
1,250,000 - 1,499,999	0	0	0.0	0	0	0.0
1,500,000 +	0	0	0.0	0	0	0.0
TOTALS	46	68	-32.4	154	283	-45.6

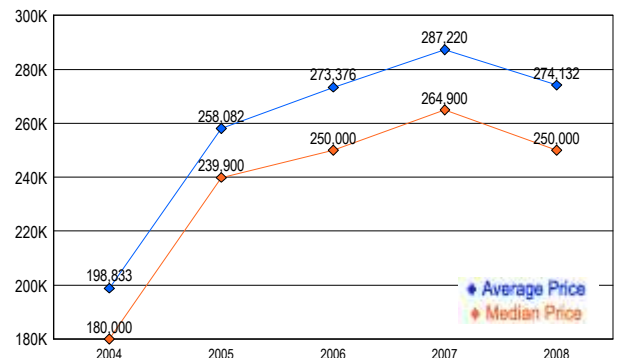
MARKET BY PRICE RANGE



SETTLEMENTS

Price Range	New This Month			Year-To-Date		
	2008	2007	% Change	2008	2007	% Change
0 - 149,999	1	0	100.0	3	1	200.0
150,000 - 199,999	6	6	0.0	27	32	-15.6
200,000 - 299,999	14	33	-57.6	52	134	-61.2
300,000 - 399,999	6	14	-57.1	30	56	-46.4
400,000 - 499,999	5	3	66.7	10	12	-16.7
500,000 - 599,999	1	0	100.0	2	5	-60.0
600,000 - 699,999	0	0	0.0	1	2	-50.0
700,000 - 799,999	0	1	-100.0	0	1	-100.0
800,000 - 899,999	0	0	0.0	0	0	0.0
900,000 - 999,999	0	0	0.0	0	0	0.0
1,000,000 - 1,249,999	0	0	0.0	0	0	0.0
1,250,000 - 1,499,999	0	0	0.0	0	0	0.0
1,500,000 +	0	0	0.0	0	0	0.0
TOTALS	33	57	-42.1	125	243	-48.6

AVERAGE & MEDIAN PRICE



DATA SOURCE: Metropolitan Regional Information Systems, Inc. (MRIS)

NOTES: Properties not listed through this Multiple Listing Service are not reflected. The term "sales" represents ratified purchase contracts. Current year information is preliminary and subject to revision. Current year- to- date contract information may not equal the sum of the monthly contract totals reported in