

HOWARD COUNTY

Residential Market Report

HOUSING REPORT

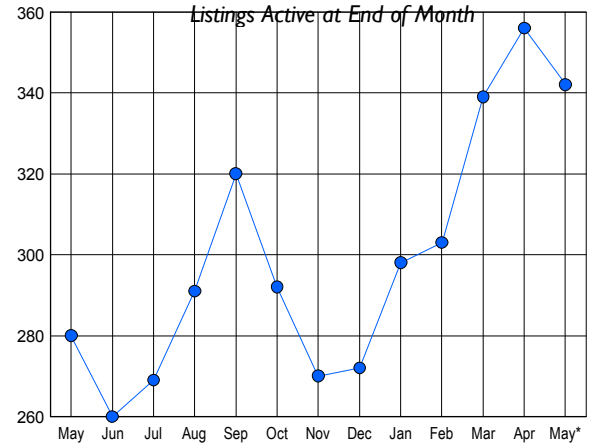
CONDO & COOPS

May 2008

LISTINGS

Price Range	New This Month			Total Actives		
	2008	2007	% Change	2008	2007	% Change
0 - 149,999	0	0	0.0	7	1	600.0
150,000 - 199,999	17	8	112.5	50	16	212.5
200,000 - 299,999	46	78	-41.0	144	117	23.1
300,000 - 399,999	26	27	-3.7	68	67	1.5
400,000 - 499,999	8	7	14.3	39	34	14.7
500,000 - 599,999	4	15	-73.3	27	40	-32.5
600,000 - 699,999	1	3	-66.7	4	4	0.0
700,000 - 799,999	0	0	0.0	2	0	0.0
800,000 - 899,999	0	0	0.0	1	1	0.0
900,000 - 999,999	0	0	0.0	0	0	0.0
1,000,000 - 1,249,999	0	0	0.0	0	0	0.0
1,250,000 - 1,499,999	0	0	0.0	0	0	0.0
1,500,000 +	0	0	0.0	0	0	0.0
TOTALS	102	138	-26.1	342	280	22.1

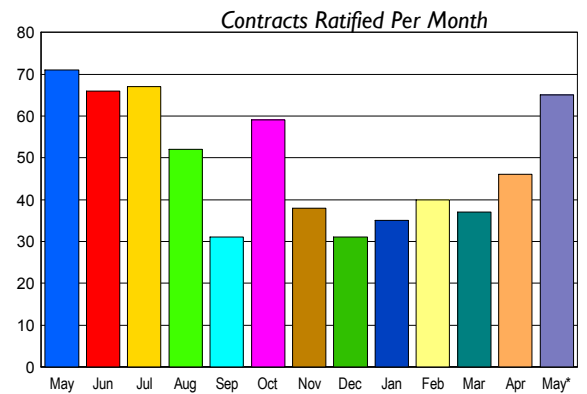
INVENTORY TREND



CONTRACTS

Price Range	New This Month			Year-To-Date		
	2008	2007	% Change	2008	2007	% Change
0 - 149,999	2	1	100.0	3	2	50.0
150,000 - 199,999	12	8	50.0	40	39	2.6
200,000 - 299,999	34	39	-12.8	105	189	-44.4
300,000 - 399,999	10	17	-41.2	41	83	-50.6
400,000 - 499,999	6	2	200.0	25	20	25.0
500,000 - 599,999	1	3	-66.7	4	9	-55.6
600,000 - 699,999	0	1	-100.0	0	5	-100.0
700,000 - 799,999	0	0	0.0	0	0	0.0
800,000 - 899,999	0	0	0.0	0	0	0.0
900,000 - 999,999	0	0	0.0	0	0	0.0
1,000,000 - 1,249,999	0	0	0.0	0	0	0.0
1,250,000 - 1,499,999	0	0	0.0	0	0	0.0
1,500,000 +	0	0	0.0	0	0	0.0
TOTALS	65	71	-8.5	218	347	-37.2

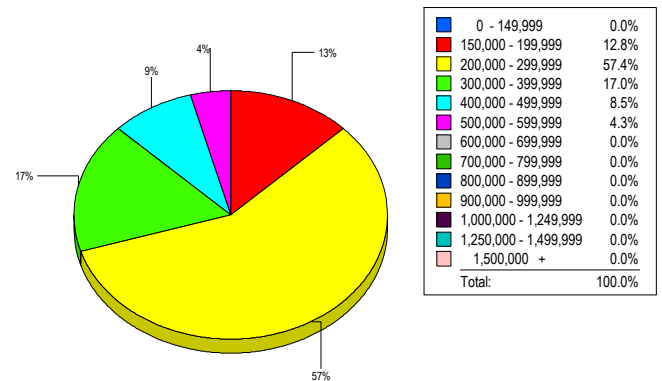
SALES TREND



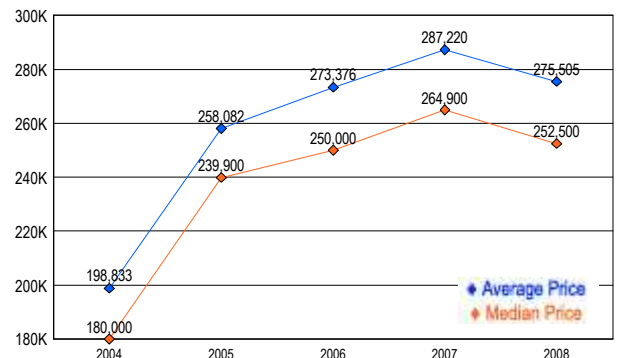
SETTLEMENTS

Price Range	New This Month			Year-To-Date		
	2008	2007	% Change	2008	2007	% Change
0 - 149,999	0	1	-100.0	3	2	50.0
150,000 - 199,999	6	6	0.0	33	38	-13.2
200,000 - 299,999	27	28	-3.6	80	166	-51.8
300,000 - 399,999	8	16	-50.0	38	72	-47.2
400,000 - 499,999	4	5	-20.0	14	17	-17.6
500,000 - 599,999	2	3	-33.3	4	8	-50.0
600,000 - 699,999	0	1	-100.0	1	3	-66.7
700,000 - 799,999	0	0	0.0	0	1	-100.0
800,000 - 899,999	0	0	0.0	0	0	0.0
900,000 - 999,999	0	0	0.0	0	0	0.0
1,000,000 - 1,249,999	0	0	0.0	0	0	0.0
1,250,000 - 1,499,999	0	0	0.0	0	0	0.0
1,500,000 +	0	0	0.0	0	0	0.0
TOTALS	47	60	-21.7	173	307	-43.6

MARKET BY PRICE RANGE



AVERAGE & MEDIAN PRICE



DATA SOURCE: Metropolitan Regional Information Systems, Inc. (MRIS)

NOTES: Properties not listed through this Multiple Listing Service are not reflected. The term "sales" represents ratified purchase contracts. Current year information is preliminary and subject to revision. Current year-to-date contract information may not equal the sum of the monthly contract totals reported in