

# HOWARD COUNTY

## Residential Market Report

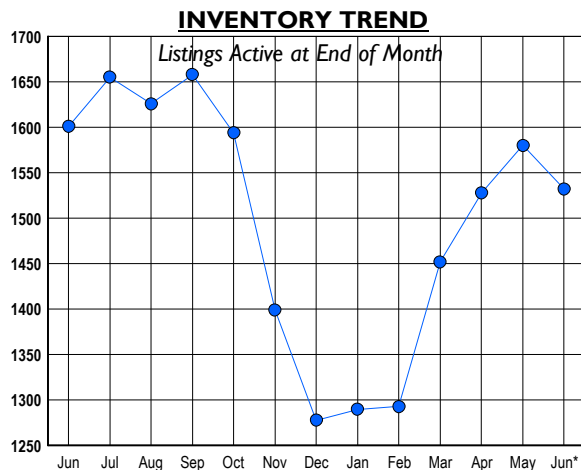
# HOUSING REPORT

## Single Family Homes

### June 2008

### LISTINGS

Prices Range	New This Month			Total Actives		
	2008	2007	% Change	2008	2007	% Change
0 - 149,999	0	0	0.0	3	1	200.0
150,000 - 199,999	2	0	200.0	6	0	600.0
200,000 - 299,999	63	42	50.0	172	73	135.6
300,000 - 399,999	102	132	-22.7	342	344	-0.6
400,000 - 499,999	84	121	-30.6	253	287	-11.8
500,000 - 599,999	51	88	-42.0	188	213	-11.7
600,000 - 699,999	42	74	-43.2	173	195	-11.3
700,000 - 799,999	26	56	-53.6	101	142	-28.9
800,000 - 899,999	11	34	-67.6	73	92	-20.7
900,000 - 999,999	12	15	-20.0	59	44	34.1
1,000,000 - 1,249,999	14	12	16.7	60	58	3.4
1,250,000 - 1,499,999	15	13	15.4	46	86	-46.5
1,500,000 +	10	12	-16.7	56	66	-15.2
<b>TOTALS</b>	<b>432</b>	<b>599</b>	<b>-27.9</b>	<b>1532</b>	<b>1601</b>	<b>-4.3</b>

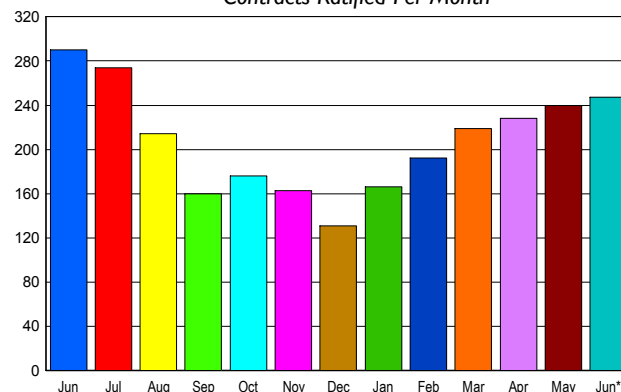


### CONTRACTS

Price Range	New This Month			Year-To-Date		
	2008	2007	% Change	2008	2007	% Change
0 - 149,999	0	0	0.0	3	1	200.0
150,000 - 199,999	2	0	200.0	5	7	-28.6
200,000 - 299,999	43	31	38.7	183	159	15.1
300,000 - 399,999	70	89	-21.3	401	497	-19.3
400,000 - 499,999	51	56	-8.9	228	323	-29.4
500,000 - 599,999	27	33	-18.2	153	225	-32.0
600,000 - 699,999	25	32	-21.9	131	184	-28.8
700,000 - 799,999	12	22	-45.5	74	101	-26.7
800,000 - 899,999	10	15	-33.3	44	59	-25.4
900,000 - 999,999	2	4	-50.0	16	26	-38.5
1,000,000 - 1,249,999	1	4	-75.0	17	33	-48.5
1,250,000 - 1,499,999	2	2	0.0	11	18	-38.9
1,500,000 +	2	2	0.0	11	10	10.0
<b>TOTALS</b>	<b>247</b>	<b>290</b>	<b>-14.8</b>	<b>1277</b>	<b>1643</b>	<b>-22.3</b>

### SALES TREND

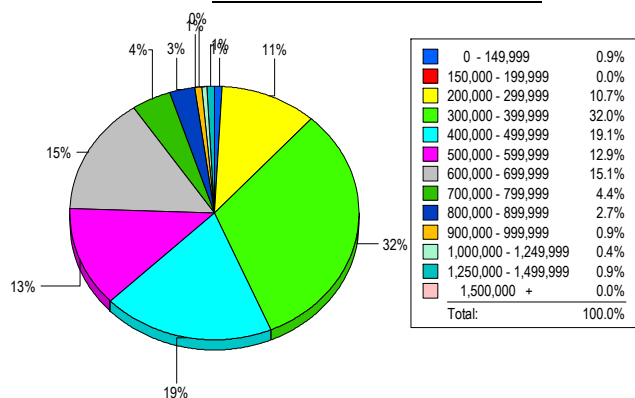
Contracts Ratified Per Month



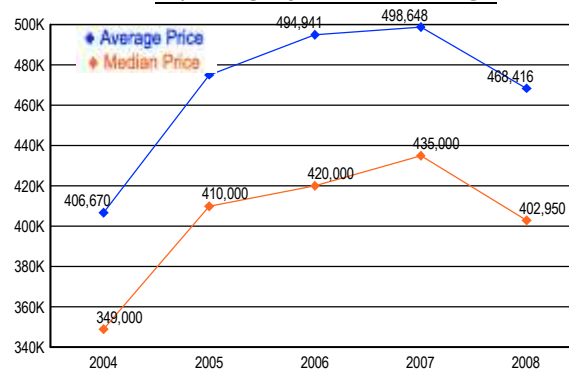
### SETTLEMENTS

Price Range	New This Month			Year-to-Date		
	2008	2007	% Change	2008	2007	% Change
0 - 149,999	2	0	200.0	3	2	50.0
150,000 - 199,999	0	0	0.0	3	10	-70.0
200,000 - 299,999	24	26	-7.7	163	149	9.4
300,000 - 399,999	72	97	-25.8	349	471	-25.9
400,000 - 499,999	43	58	-25.9	202	282	-28.4
500,000 - 599,999	29	43	-32.6	124	204	-39.2
600,000 - 699,999	34	50	-32.0	99	168	-41.1
700,000 - 799,999	10	19	-47.4	48	81	-40.7
800,000 - 899,999	6	15	-60.0	37	53	-30.2
900,000 - 999,999	2	7	-71.4	14	20	-30.0
1,000,000 - 1,249,999	1	5	-80.0	15	28	-46.4
1,250,000 - 1,499,999	2	5	-60.0	6	13	-53.8
1,500,000 +	0	1	-100.0	5	9	-44.4
<b>TOTALS</b>	<b>225</b>	<b>326</b>	<b>-31.0</b>	<b>1068</b>	<b>1490</b>	<b>-28.3</b>

### MARKET BY PRICE RANGE



### AVERAGE & MEDIAN PRICE



DATA SOURCE: Metropolitan Regional Information Systems, Inc. (MRIS)

NOTES: Properties not listed through this Multiple Listing Service are not reflected. The term "sales" represents ratified purchase contracts. Current year information is preliminary and subject to revision. Current year-to-date contract information may not equal the sum of the monthly contract totals reported in