

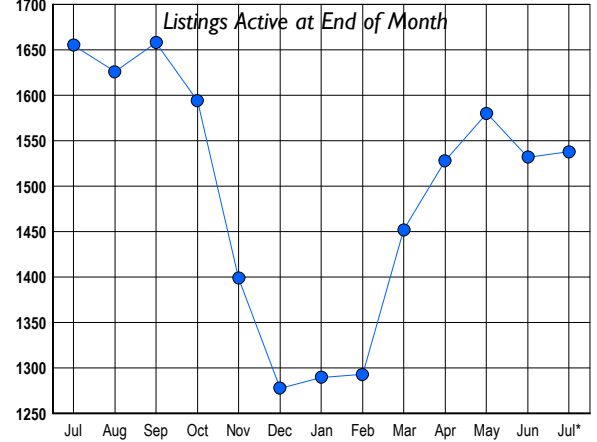
# HOWARD COUNTY Residential Market Report

# HOUSING REPORT Single Family Homes July 2008

## LISTINGS

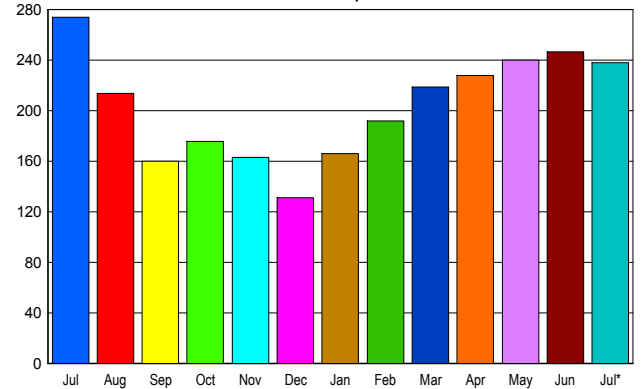
Prices Range	New This Month			Total Actives		
	2008	2007	% Change	2008	2007	% Change
0 - 149,999	0	1	-100.0	4	1	300.0
150,000 - 199,999	0	1	-100.0	3	0	300.0
200,000 - 299,999	61	38	60.5	194	90	115.6
300,000 - 399,999	106	166	-36.1	336	383	-12.3
400,000 - 499,999	71	83	-14.5	255	287	-11.1
500,000 - 599,999	42	68	-38.2	185	220	-15.9
600,000 - 699,999	47	54	-13.0	171	173	-1.2
700,000 - 799,999	32	41	-22.0	101	133	-24.1
800,000 - 899,999	27	28	-3.6	74	97	-23.7
900,000 - 999,999	7	12	-41.7	49	52	-5.8
1,000,000 - 1,249,999	19	8	137.5	63	60	5.0
1,250,000 - 1,499,999	5	7	-28.6	49	85	-42.4
1,500,000 +	9	15	-40.0	54	74	-27.0
<b>TOTALS</b>	<b>426</b>	<b>522</b>	<b>-18.4</b>	<b>1538</b>	<b>1655</b>	<b>-7.1</b>

## INVENTORY TREND



## SALES TREND

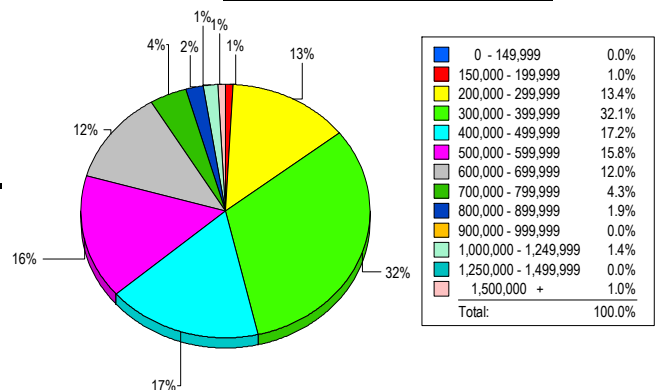
Contracts Ratified Per Month



## CONTRACTS

Price Range	New This Month			Year-To-Date		
	2008	2007	% Change	2008	2007	% Change
0 - 149,999	0	0	0.0	3	1	200.0
150,000 - 199,999	1	2	-50.0	6	9	-33.3
200,000 - 299,999	43	19	126.3	220	177	24.3
300,000 - 399,999	60	74	-18.9	458	566	-19.1
400,000 - 499,999	39	52	-25.0	266	369	-27.9
500,000 - 599,999	30	40	-25.0	179	263	-31.9
600,000 - 699,999	36	46	-21.7	164	225	-27.1
700,000 - 799,999	13	15	-13.3	86	116	-25.9
800,000 - 899,999	5	12	-58.3	47	70	-32.9
900,000 - 999,999	4	6	-33.3	20	30	-33.3
1,000,000 - 1,249,999	4	4	0.0	24	35	-31.4
1,250,000 - 1,499,999	3	2	50.0	14	20	-30.0
1,500,000 +	0	2	-100.0	11	13	-15.4
<b>TOTALS</b>	<b>238</b>	<b>274</b>	<b>-13.1</b>	<b>1498</b>	<b>1894</b>	<b>-20.9</b>

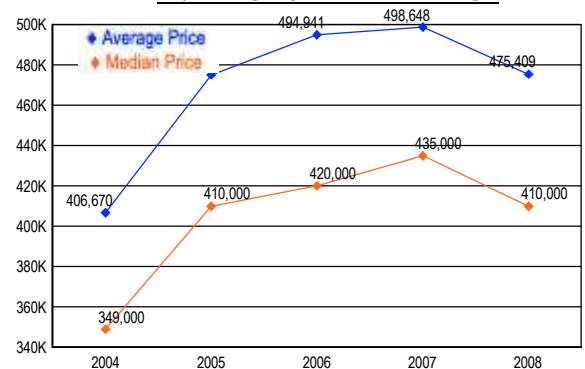
## MARKET BY PRICE RANGE



## SETTLEMENTS

Price Range	New This Month			Year-to-Date		
	2008	2007	% Change	2008	2007	% Change
0 - 149,999	0	0	0.0	3	2	50.0
150,000 - 199,999	2	1	100.0	5	11	-54.5
200,000 - 299,999	28	23	21.7	191	173	10.4
300,000 - 399,999	67	91	-26.4	419	570	-26.5
400,000 - 499,999	36	50	-28.0	242	335	-27.8
500,000 - 599,999	33	45	-26.7	161	250	-35.6
600,000 - 699,999	25	28	-10.7	128	201	-36.3
700,000 - 799,999	9	19	-52.6	59	101	-41.6
800,000 - 899,999	4	11	-63.6	43	65	-33.8
900,000 - 999,999	0	5	-100.0	15	26	-42.3
1,000,000 - 1,249,999	3	5	-40.0	22	33	-33.3
1,250,000 - 1,499,999	0	1	-100.0	7	14	-50.0
1,500,000 +	2	4	-50.0	9	13	-30.8
<b>TOTALS</b>	<b>209</b>	<b>283</b>	<b>-26.1</b>	<b>1304</b>	<b>1794</b>	<b>-27.3</b>

## AVERAGE & MEDIAN PRICE



DATA SOURCE: Metropolitan Regional Information Systems, Inc. (MRIS)

NOTES: Properties not listed through this Multiple Listing Service are not reflected. The term "sales" represents ratified purchase contracts. Current year information is preliminary and subject to revision. Current year-to-date contract information may not equal the sum of the monthly contract totals reported in