

HOWARD COUNTY

Residential Market Report

HOUSING REPORT

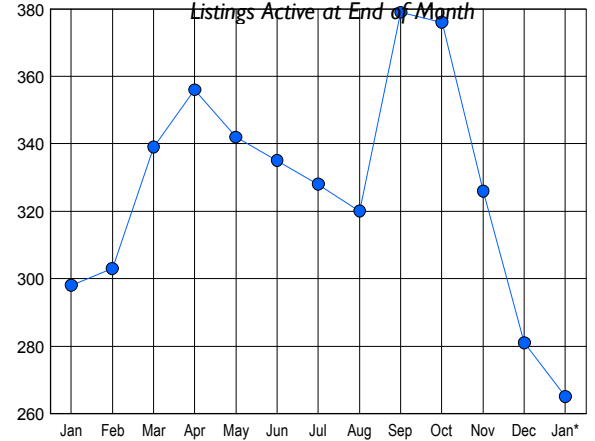
CONDO & COOPS

January 2009

LISTINGS

Price Range	New This Month			Total Actives		
	2009	2008	% Change	2009	2008	% Change
0 - 149,999	1	0	100.0	9	2	350.0
150,000 - 199,999	8	15	-46.7	47	31	51.6
200,000 - 299,999	23	54	-57.4	107	125	-14.4
300,000 - 399,999	18	24	-25.0	57	65	-12.3
400,000 - 499,999	4	17	-76.5	26	40	-35.0
500,000 - 599,999	4	8	-50.0	15	29	-48.3
600,000 - 699,999	1	0	100.0	1	3	-66.7
700,000 - 799,999	1	0	100.0	3	1	200.0
800,000 - 899,999	0	1	-100.0	0	2	-100.0
900,000 - 999,999	0	0	0.0	0	0	0.0
1,000,000 - 1,249,999	0	0	0.0	0	0	0.0
1,250,000 - 1,499,999	0	0	0.0	0	0	0.0
1,500,000 +	0	0	0.0	0	0	0.0
TOTALS	60	119	-49.6	265	298	-11.1

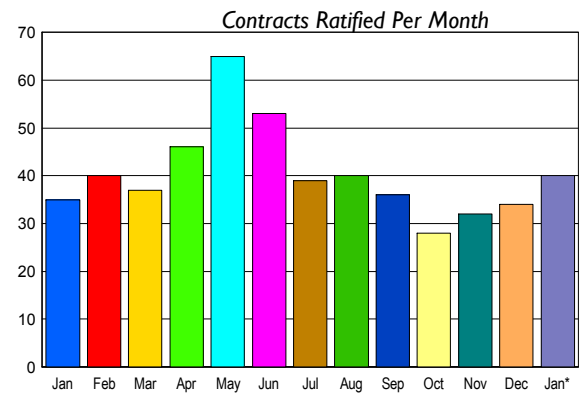
INVENTORY TREND



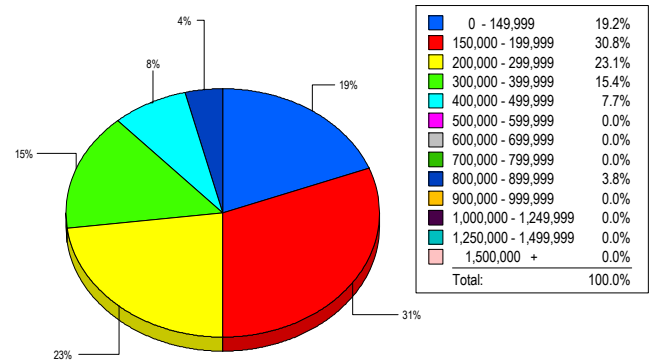
CONTRACTS

Price Range	New This Month			Year-To-Date		
	2009	2008	% Change	2009	2008	% Change
0 - 149,999	3	0	300.0	3	0	300.0
150,000 - 199,999	11	7	57.1	11	7	57.1
200,000 - 299,999	18	19	-5.3	18	19	-5.3
300,000 - 399,999	5	6	-16.7	5	6	-16.7
400,000 - 499,999	2	3	-33.3	2	3	-33.3
500,000 - 599,999	0	0	0.0	0	0	0.0
600,000 - 699,999	0	0	0.0	0	0	0.0
700,000 - 799,999	0	0	0.0	0	0	0.0
800,000 - 899,999	1	0	100.0	1	0	100.0
900,000 - 999,999	0	0	0.0	0	0	0.0
1,000,000 - 1,249,999	0	0	0.0	0	0	0.0
1,250,000 - 1,499,999	0	0	0.0	0	0	0.0
1,500,000 +	0	0	0.0	0	0	0.0
TOTALS	40	35	14.3	40	35	14.3

SALES TREND



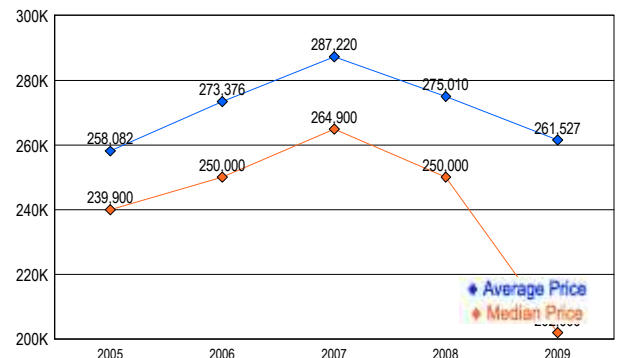
MARKET BY PRICE RANGE



SETTLEMENTS

Price Range	New This Month			Year-To-Date		
	2009	2008	% Change	2009	2008	% Change
0 - 149,999	5	0	500.0	5	0	-500.0
150,000 - 199,999	8	3	166.7	8	3	166.7
200,000 - 299,999	6	8	-25.0	6	8	-25.0
300,000 - 399,999	4	9	-55.6	4	9	-55.6
400,000 - 499,999	2	1	100.0	2	1	100.0
500,000 - 599,999	0	0	0.0	0	0	0.0
600,000 - 699,999	0	0	0.0	0	0	0.0
700,000 - 799,999	0	0	0.0	0	0	0.0
800,000 - 899,999	1	0	100.0	1	0	-100.0
900,000 - 999,999	0	0	0.0	0	0	0.0
1,000,000 - 1,249,999	0	0	0.0	0	0	0.0
1,250,000 - 1,499,999	0	0	0.0	0	0	0.0
1,500,000 +	0	0	0.0	0	0	0.0
TOTALS	26	21	23.8	26	21	23.8

AVERAGE & MEDIAN PRICE



DATA SOURCE: Metropolitan Regional Information Systems, Inc. (MRIS)

NOTES: Properties not listed through this Multiple Listing Service are not reflected. The term "sales" represents ratified purchase contracts. Current year information is preliminary and subject to revision. Current year-to-date contract information may not equal the sum of the monthly contract totals reported in