

HOWARD COUNTY

Residential Market Report

HOUSING REPORT

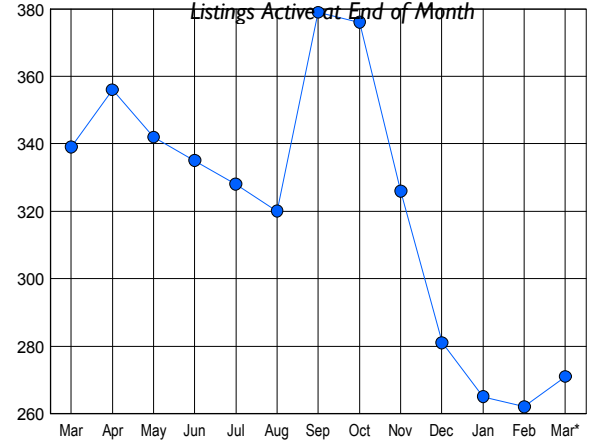
CONDO & COOPS

March 2009

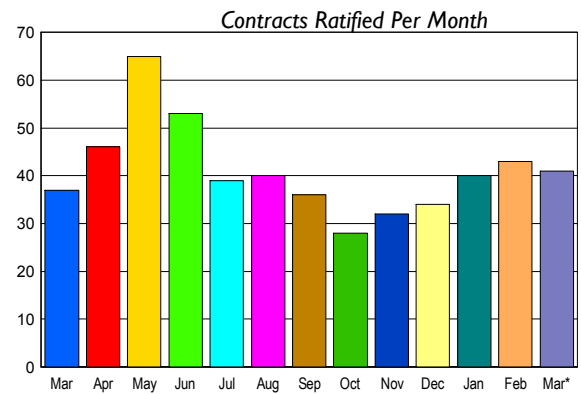
LISTINGS

Price Range	New This Month			Total Actives		
	2009	2008	% Change	2009	2008	% Change
0 - 149,999	11	1	1000.0	26	3	766.7
150,000 - 199,999	13	17	-23.5	55	47	17.0
200,000 - 299,999	30	42	-28.6	99	143	-30.8
300,000 - 399,999	16	21	-23.8	54	66	-18.2
400,000 - 499,999	7	12	-41.7	21	40	-47.5
500,000 - 599,999	1	6	-83.3	13	33	-60.6
600,000 - 699,999	1	0	100.0	1	5	-80.0
700,000 - 799,999	0	0	0.0	2	0	0.0
800,000 - 899,999	0	0	0.0	0	2	-100.0
900,000 - 999,999	0	0	0.0	0	0	0.0
1,000,000 - 1,249,999	0	0	0.0	0	0	0.0
1,250,000 - 1,499,999	0	0	0.0	0	0	0.0
1,500,000 +	0	0	0.0	0	0	0.0
TOTALS	79	99	-20.2	271	339	-20.1

INVENTORY TREND



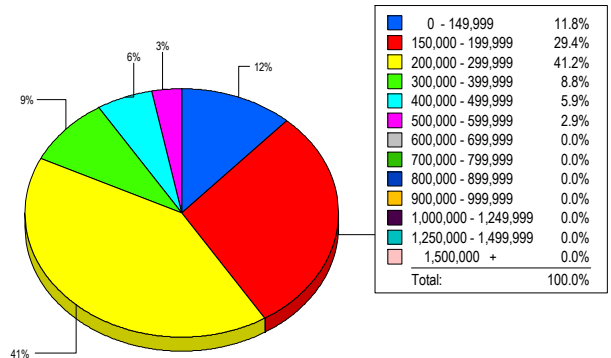
SALES TREND



CONTRACTS

Price Range	New This Month			Year-To-Date		
	2009	2008	% Change	2009	2008	% Change
0 - 149,999	1	1	0.0	5	1	400.0
150,000 - 199,999	8	7	14.3	26	23	13.0
200,000 - 299,999	23	15	53.3	65	48	35.4
300,000 - 399,999	8	7	14.3	17	24	-29.2
400,000 - 499,999	0	7	-100.0	5	15	-66.7
500,000 - 599,999	1	0	100.0	1	0	100.0
600,000 - 699,999	0	0	0.0	0	0	0.0
700,000 - 799,999	0	0	0.0	0	0	0.0
800,000 - 899,999	0	0	0.0	1	0	100.0
900,000 - 999,999	0	0	0.0	0	0	0.0
1,000,000 - 1,249,999	0	0	0.0	0	0	0.0
1,250,000 - 1,499,999	0	0	0.0	0	0	0.0
1,500,000 +	0	0	0.0	0	0	0.0
TOTALS	41	37	10.8	120	111	8.1

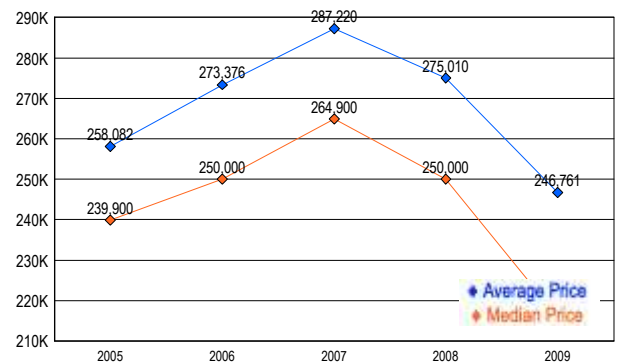
MARKET BY PRICE RANGE



SETTLEMENTS

Price Range	New This Month			Year-To-Date		
	2009	2008	% Change	2009	2008	% Change
0 - 149,999	4	1	300.0	10	2	400.0
150,000 - 199,999	10	9	11.1	27	21	28.6
200,000 - 299,999	14	12	16.7	34	37	-8.1
300,000 - 399,999	3	8	-62.5	11	21	-47.6
400,000 - 499,999	2	1	100.0	7	4	75.0
500,000 - 599,999	1	0	100.0	1	1	0.0
600,000 - 699,999	0	1	-100.0	0	1	-100.0
700,000 - 799,999	0	0	0.0	0	0	0.0
800,000 - 899,999	0	0	0.0	1	0	-100.0
900,000 - 999,999	0	0	0.0	0	0	0.0
1,000,000 - 1,249,999	0	0	0.0	0	0	0.0
1,250,000 - 1,499,999	0	0	0.0	0	0	0.0
1,500,000 +	0	0	0.0	0	0	0.0
TOTALS	34	32	6.3	91	87	4.6

AVERAGE & MEDIAN PRICE



DATA SOURCE: Metropolitan Regional Information Systems, Inc. (MRIS)

NOTES: Properties not listed through this Multiple Listing Service are not reflected. The term "sales" represents ratified purchase contracts. Current year information is preliminary and subject to revision. Current year-to-date contract information may not equal the sum of the monthly contract totals reported in