

HOWARD COUNTY

Residential Market Report

HOUSING REPORT

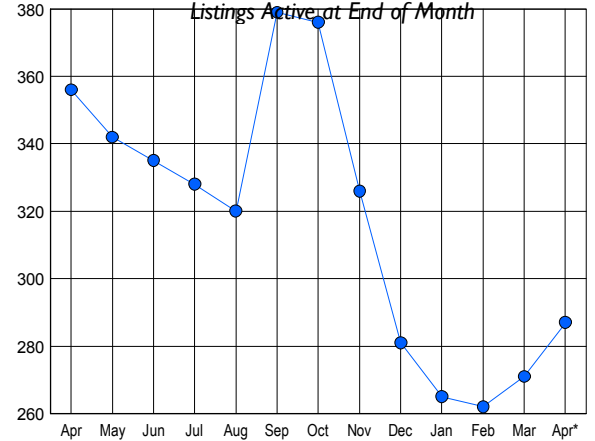
CONDO & COOPS

April 2009

LISTINGS

Price Range	New This Month			Total Actives		
	2009	2008	% Change	2009	2008	% Change
0 - 149,999	5	1	400.0	25	8	212.5
150,000 - 199,999	11	11	0.0	52	43	20.9
200,000 - 299,999	45	57	-21.1	110	160	-31.3
300,000 - 399,999	22	22	0.0	60	70	-14.3
400,000 - 499,999	8	7	14.3	23	40	-42.5
500,000 - 599,999	6	3	100.0	14	28	-50.0
600,000 - 699,999	0	1	-100.0	1	4	-75.0
700,000 - 799,999	0	1	-100.0	2	2	0.0
800,000 - 899,999	0	0	0.0	0	1	-100.0
900,000 - 999,999	0	0	0.0	0	0	0.0
1,000,000 - 1,249,999	0	0	0.0	0	0	0.0
1,250,000 - 1,499,999	0	0	0.0	0	0	0.0
1,500,000 +	0	0	0.0	0	0	0.0
TOTALS	97	103	-5.8	287	356	-19.4

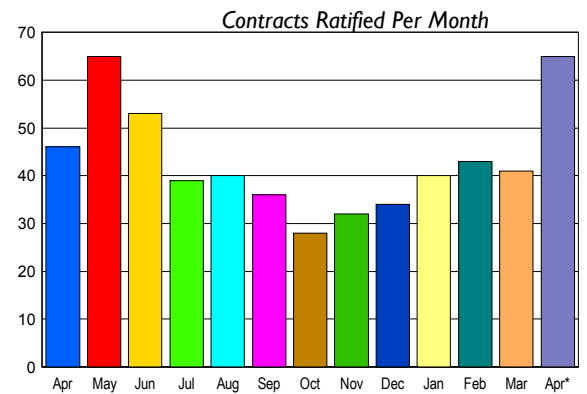
INVENTORY TREND



CONTRACTS

Price Range	New This Month			Year-To-Date		
	2009	2008	% Change	2009	2008	% Change
0 - 149,999	9	0	900.0	15	1	1400.0
150,000 - 199,999	15	5	200.0	41	28	46.4
200,000 - 299,999	23	23	0.0	87	70	24.3
300,000 - 399,999	13	9	44.4	29	33	-12.1
400,000 - 499,999	5	6	-16.7	10	19	-47.4
500,000 - 599,999	0	3	-100.0	1	3	-66.7
600,000 - 699,999	0	0	0.0	0	0	0.0
700,000 - 799,999	0	0	0.0	0	0	0.0
800,000 - 899,999	0	0	0.0	1	0	100.0
900,000 - 999,999	0	0	0.0	0	0	0.0
1,000,000 - 1,249,999	0	0	0.0	0	0	0.0
1,250,000 - 1,499,999	0	0	0.0	0	0	0.0
1,500,000 +	0	0	0.0	0	0	0.0
TOTALS	65	46	41.3	184	154	19.5

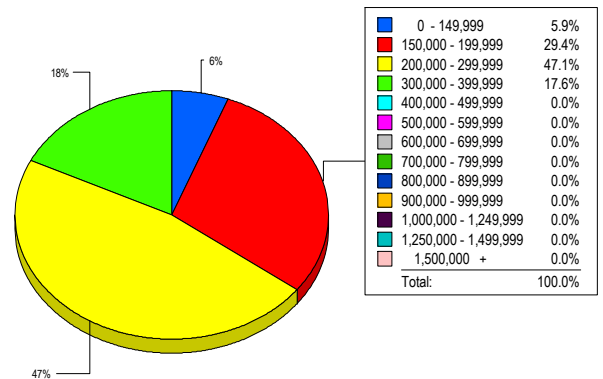
SALES TREND



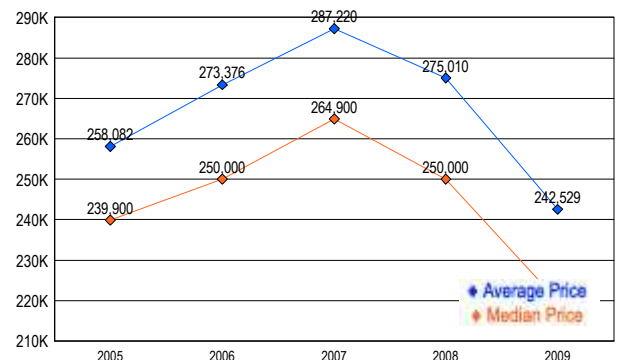
SETTLEMENTS

Price Range	New This Month			Year-To-Date		
	2009	2008	% Change	2009	2008	% Change
0 - 149,999	2	1	100.0	12	3	300.0
150,000 - 199,999	10	6	66.7	37	27	37.0
200,000 - 299,999	16	14	14.3	51	52	-1.9
300,000 - 399,999	6	6	0.0	18	30	-40.0
400,000 - 499,999	0	5	-100.0	7	10	-30.0
500,000 - 599,999	0	1	-100.0	1	2	-50.0
600,000 - 699,999	0	0	0.0	0	1	-100.0
700,000 - 799,999	0	0	0.0	0	0	0.0
800,000 - 899,999	0	0	0.0	1	0	-100.0
900,000 - 999,999	0	0	0.0	0	0	0.0
1,000,000 - 1,249,999	0	0	0.0	0	0	0.0
1,250,000 - 1,499,999	0	0	0.0	0	0	0.0
1,500,000 +	0	0	0.0	0	0	0.0
TOTALS	34	33	3.0	127	125	1.6

MARKET BY PRICE RANGE



AVERAGE & MEDIAN PRICE



DATA SOURCE: Metropolitan Regional Information Systems, Inc. (MRIS)

NOTES: Properties not listed through this Multiple Listing Service are not reflected. The term "sales" represents ratified purchase contracts. Current year information is preliminary and subject to revision. Current year-to-date contract information may not equal the sum of the monthly contract totals reported in