

HOWARD COUNTY

Residential Market Report

HOUSING REPORT

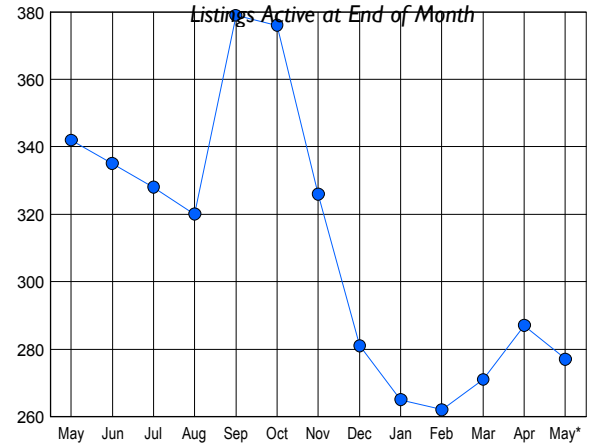
CONDO & COOPS

May 2009

LISTINGS

Price Range	New This Month			Total Actives		
	2009	2008	% Change	2009	2008	% Change
0 - 149,999	7	0	700.0	24	7	242.9
150,000 - 199,999	17	17	0.0	57	50	14.0
200,000 - 299,999	30	46	-34.8	95	144	-34.0
300,000 - 399,999	13	26	-50.0	57	68	-16.2
400,000 - 499,999	7	8	-12.5	23	39	-41.0
500,000 - 599,999	4	4	0.0	17	27	-37.0
600,000 - 699,999	1	1	0.0	2	4	-50.0
700,000 - 799,999	0	0	0.0	2	2	0.0
800,000 - 899,999	0	0	0.0	0	1	-100.0
900,000 - 999,999	0	0	0.0	0	0	0.0
1,000,000 - 1,249,999	0	0	0.0	0	0	0.0
1,250,000 - 1,499,999	0	0	0.0	0	0	0.0
1,500,000 +	0	0	0.0	0	0	0.0
TOTALS	79	102	-22.5	277	342	-19.0

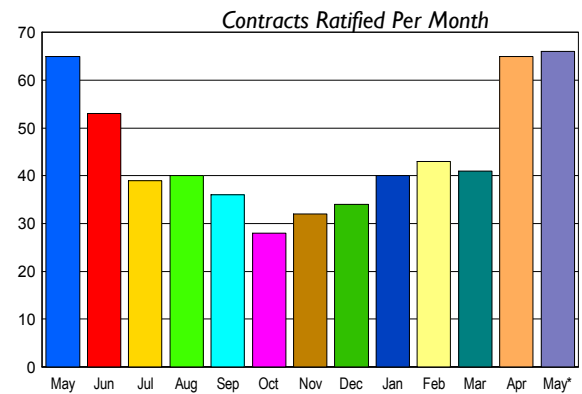
INVENTORY TREND



CONTRACTS

Price Range	New This Month			Year-To-Date		
	2009	2008	% Change	2009	2008	% Change
0 - 149,999	8	2	300.0	23	3	666.7
150,000 - 199,999	13	12	8.3	53	40	32.5
200,000 - 299,999	27	34	-20.6	115	105	9.5
300,000 - 399,999	14	10	40.0	42	41	2.4
400,000 - 499,999	2	6	-66.7	12	25	-52.0
500,000 - 599,999	2	1	100.0	3	4	-25.0
600,000 - 699,999	0	0	0.0	0	0	0.0
700,000 - 799,999	0	0	0.0	0	0	0.0
800,000 - 899,999	0	0	0.0	1	0	100.0
900,000 - 999,999	0	0	0.0	0	0	0.0
1,000,000 - 1,249,999	0	0	0.0	0	0	0.0
1,250,000 - 1,499,999	0	0	0.0	0	0	0.0
1,500,000 +	0	0	0.0	0	0	0.0
TOTALS	66	65	1.5	249	218	14.2

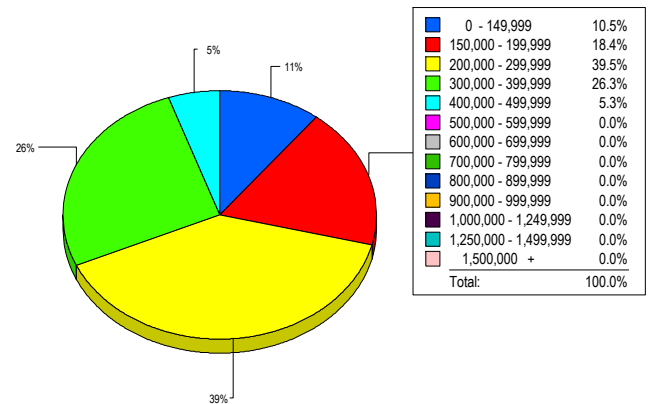
SALES TREND



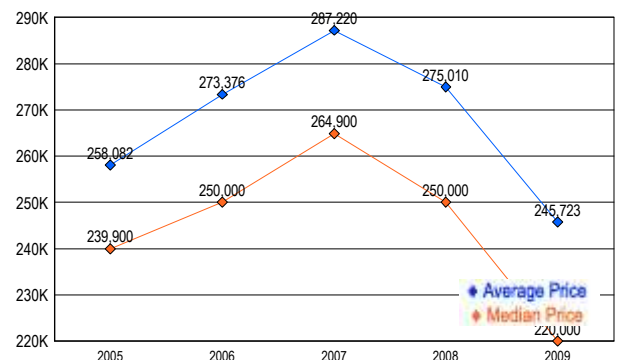
SETTLEMENTS

Price Range	New This Month			Year-To-Date		
	2009	2008	% Change	2009	2008	% Change
0 - 149,999	4	0	400.0	16	3	433.3
150,000 - 199,999	7	6	16.7	44	33	33.3
200,000 - 299,999	15	27	-44.4	67	80	-16.3
300,000 - 399,999	10	8	25.0	30	38	-21.1
400,000 - 499,999	2	4	-50.0	9	14	-35.7
500,000 - 599,999	0	2	-100.0	1	4	-75.0
600,000 - 699,999	0	0	0.0	0	1	-100.0
700,000 - 799,999	0	0	0.0	0	0	0.0
800,000 - 899,999	0	0	0.0	1	0	-100.0
900,000 - 999,999	0	0	0.0	0	0	0.0
1,000,000 - 1,249,999	0	0	0.0	0	0	0.0
1,250,000 - 1,499,999	0	0	0.0	0	0	0.0
1,500,000 +	0	0	0.0	0	0	0.0
TOTALS	38	47	-19.1	168	173	-2.9

MARKET BY PRICE RANGE



AVERAGE & MEDIAN PRICE



DATA SOURCE: Metropolitan Regional Information Systems, Inc. (MRIS)

NOTES: Properties not listed through this Multiple Listing Service are not reflected. The term "sales" represents ratified purchase contracts. Current year information is preliminary and subject to revision. Current year- to- date contract information may not equal the sum of the monthly contract totals reported in