

HOWARD COUNTY

Residential Market Report

HOUSING REPORT

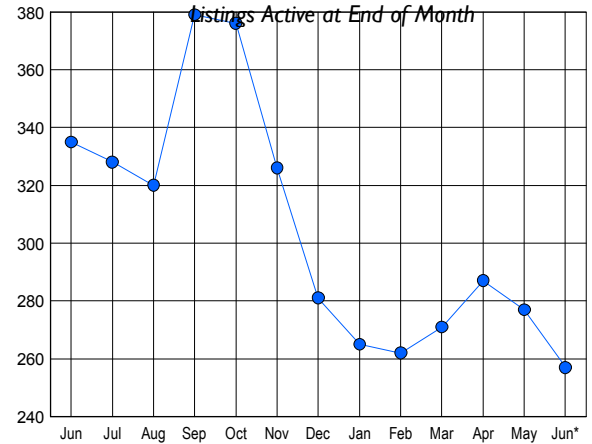
CONDO & COOPS

June 2009

LISTINGS

Price Range	New This Month			Total Actives		
	2009	2008	% Change	2009	2008	% Change
0 - 149,999	4	0	400.0	22	8	175.0
150,000 - 199,999	18	10	80.0	52	44	18.2
200,000 - 299,999	36	42	-14.3	81	146	-44.5
300,000 - 399,999	37	19	94.7	62	62	0.0
400,000 - 499,999	14	22	-36.4	25	41	-39.0
500,000 - 599,999	0	4	-100.0	12	26	-53.8
600,000 - 699,999	0	1	-100.0	2	4	-50.0
700,000 - 799,999	0	1	-100.0	1	3	-66.7
800,000 - 899,999	0	0	0.0	0	1	-100.0
900,000 - 999,999	0	0	0.0	0	0	0.0
1,000,000 - 1,249,999	0	0	0.0	0	0	0.0
1,250,000 - 1,499,999	0	0	0.0	0	0	0.0
1,500,000 +	0	0	0.0	0	0	0.0
TOTALS	109	99	10.1	257	335	-23.3

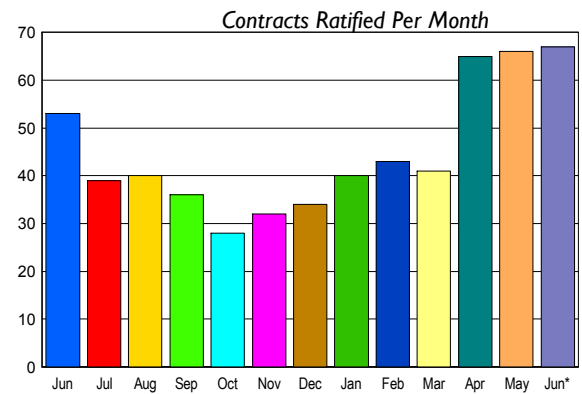
INVENTORY TREND



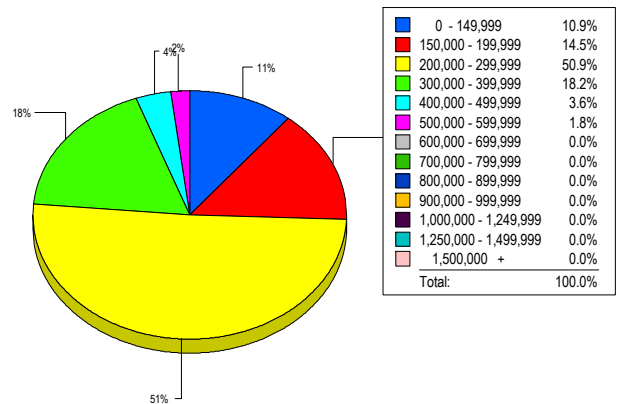
CONTRACTS

Price Range	New This Month			Year-To-Date		
	2009	2008	% Change	2009	2008	% Change
0 - 149,999	4	1	300.0	27	4	575.0
150,000 - 199,999	17	8	112.5	67	47	42.6
200,000 - 299,999	25	22	13.6	137	126	8.7
300,000 - 399,999	12	9	33.3	51	50	2.0
400,000 - 499,999	6	11	-45.5	17	36	-52.8
500,000 - 599,999	2	2	0.0	5	6	-16.7
600,000 - 699,999	1	0	100.0	1	0	100.0
700,000 - 799,999	0	0	0.0	0	0	0.0
800,000 - 899,999	0	0	0.0	1	0	100.0
900,000 - 999,999	0	0	0.0	0	0	0.0
1,000,000 - 1,249,999	0	0	0.0	0	0	0.0
1,250,000 - 1,499,999	0	0	0.0	0	0	0.0
1,500,000 +	0	0	0.0	0	0	0.0
TOTALS	67	53	26.4	306	269	13.8

SALES TREND



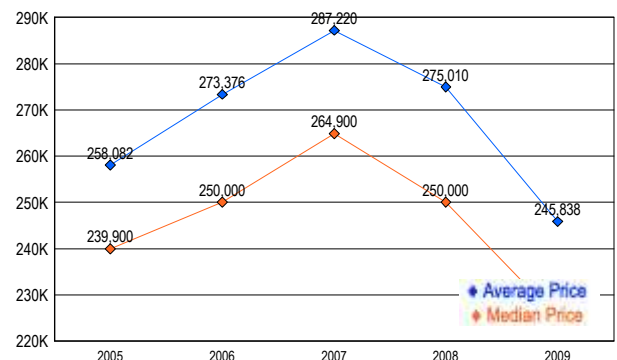
MARKET BY PRICE RANGE



SETTLEMENTS

Price Range	New This Month			Year-To-Date		
	2009	2008	% Change	2009	2008	% Change
0 - 149,999	6	2	200.0	23	5	360.0
150,000 - 199,999	8	13	-38.5	53	46	15.2
200,000 - 299,999	28	33	-15.2	96	113	-15.0
300,000 - 399,999	10	8	25.0	40	48	-16.7
400,000 - 499,999	2	3	-33.3	11	17	-35.3
500,000 - 599,999	1	1	0.0	2	5	-60.0
600,000 - 699,999	0	0	0.0	0	1	-100.0
700,000 - 799,999	0	0	0.0	0	0	0.0
800,000 - 899,999	0	0	0.0	1	0	-100.0
900,000 - 999,999	0	0	0.0	0	0	0.0
1,000,000 - 1,249,999	0	0	0.0	0	0	0.0
1,250,000 - 1,499,999	0	0	0.0	0	0	0.0
1,500,000 +	0	0	0.0	0	0	0.0
TOTALS	55	60	-8.3	226	235	-3.8

AVERAGE & MEDIAN PRICE



DATA SOURCE: Metropolitan Regional Information Systems, Inc. (MRIS)

NOTES: Properties not listed through this Multiple Listing Service are not reflected. The term "sales" represents ratified purchase contracts. Current year information is preliminary and subject to revision. Current year-to-date contract information may not equal the sum of the monthly contract totals reported in