

HOWARD COUNTY

Residential Market Report

HOUSING REPORT

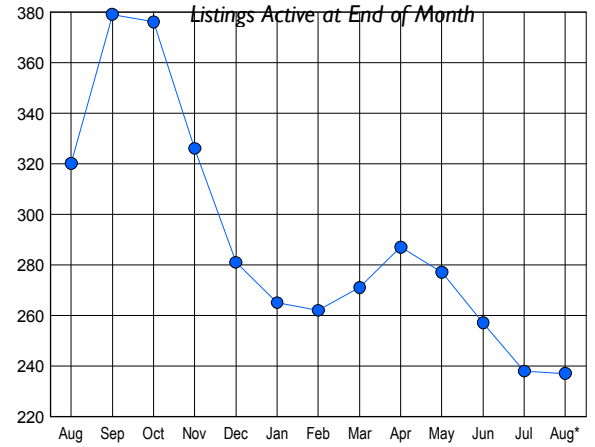
CONDO & COOPS

August 2009

LISTINGS

Price Range	New This Month			Total Actives		
	2009	2008	% Change	2009	2008	% Change
0 - 149,999	8	3	166.7	22	12	83.3
150,000 - 199,999	13	11	18.2	49	57	-14.0
200,000 - 299,999	29	28	3.6	80	118	-32.2
300,000 - 399,999	12	15	-20.0	54	64	-15.6
400,000 - 499,999	3	8	-62.5	25	35	-28.6
500,000 - 599,999	1	5	-80.0	5	23	-78.3
600,000 - 699,999	0	0	0.0	1	6	-83.3
700,000 - 799,999	0	0	0.0	1	3	-66.7
800,000 - 899,999	0	0	0.0	0	2	-100.0
900,000 - 999,999	0	0	0.0	0	0	0.0
1,000,000 - 1,249,999	0	0	0.0	0	0	0.0
1,250,000 - 1,499,999	0	0	0.0	0	0	0.0
1,500,000 +	0	0	0.0	0	0	0.0
TOTALS	66	70	-5.7	237	320	-25.9

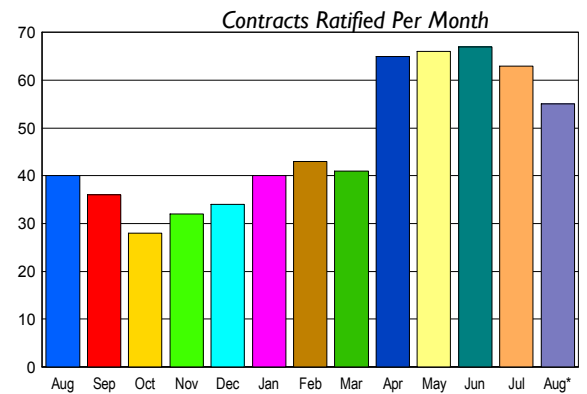
INVENTORY TREND



CONTRACTS

Price Range	New This Month			Year-To-Date		
	2009	2008	% Change	2009	2008	% Change
0 - 149,999	8	1	700.0	40	7	471.4
150,000 - 199,999	8	7	14.3	89	59	50.8
200,000 - 299,999	24	18	33.3	175	165	6.1
300,000 - 399,999	9	8	12.5	70	62	12.9
400,000 - 499,999	3	5	-40.0	24	44	-45.5
500,000 - 599,999	3	1	200.0	10	7	42.9
600,000 - 699,999	0	0	0.0	1	0	100.0
700,000 - 799,999	0	0	0.0	0	0	0.0
800,000 - 899,999	0	0	0.0	1	0	100.0
900,000 - 999,999	0	0	0.0	0	0	0.0
1,000,000 - 1,249,999	0	0	0.0	0	0	0.0
1,250,000 - 1,499,999	0	0	0.0	0	0	0.0
1,500,000 +	0	0	0.0	0	0	0.0
TOTALS	55	40	37.5	410	344	19.2

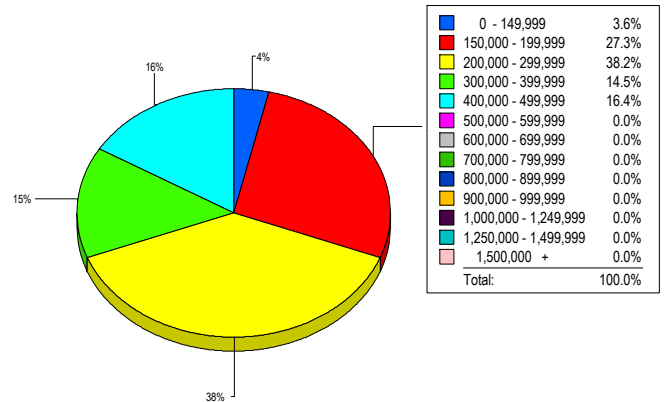
SALES TREND



SETTLEMENTS

Price Range	New This Month			Year-To-Date		
	2009	2008	% Change	2009	2008	% Change
0 - 149,999	2	1	100.0	34	7	385.7
150,000 - 199,999	15	6	150.0	79	57	38.6
200,000 - 299,999	21	20	5.0	142	151	-6.0
300,000 - 399,999	8	5	60.0	58	61	-4.9
400,000 - 499,999	9	3	200.0	24	27	-11.1
500,000 - 599,999	0	0	0.0	4	7	-42.9
600,000 - 699,999	0	0	0.0	0	1	-100.0
700,000 - 799,999	0	0	0.0	0	0	0.0
800,000 - 899,999	0	0	0.0	1	0	-100.0
900,000 - 999,999	0	0	0.0	0	0	0.0
1,000,000 - 1,249,999	0	0	0.0	0	0	0.0
1,250,000 - 1,499,999	0	0	0.0	0	0	0.0
1,500,000 +	0	0	0.0	0	0	0.0
TOTALS	55	35	57.1	342	311	10.0

MARKET BY PRICE RANGE



AVERAGE & MEDIAN PRICE



DATA SOURCE: Metropolitan Regional Information Systems, Inc. (MRIS)

NOTES: Properties not listed through this Multiple Listing Service are not reflected. The term "sales" represents ratified purchase contracts. Current year information is preliminary and subject to revision. Current year-to-date contract information may not equal the sum of the monthly contract totals reported in