

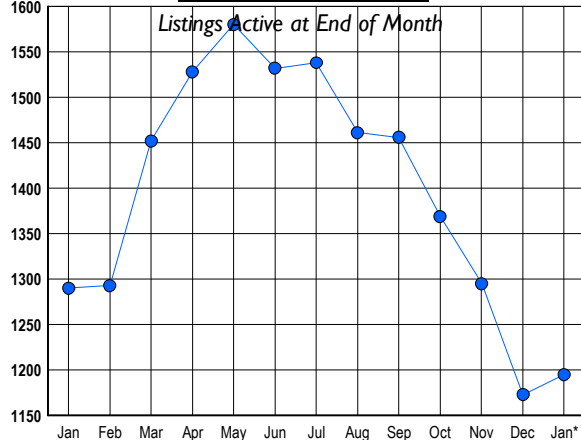
HOWARD COUNTY Residential Market Report

HOUSING REPORT Single Family Homes January 2009

LISTINGS

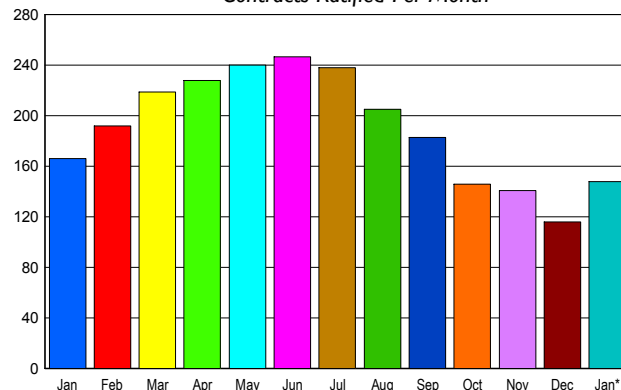
Prices Range	New This Month			Total Actives		
	2009	2008	% Change	2009	2008	% Change
0 - 149,999	1	0	100.0	4	2	100.0
150,000 - 199,999	4	1	300.0	16	3	433.3
200,000 - 299,999	48	49	-2.0	186	123	51.2
300,000 - 399,999	63	99	-36.4	235	310	-24.2
400,000 - 499,999	55	61	-9.8	178	234	-23.9
500,000 - 599,999	47	44	6.8	156	153	2.0
600,000 - 699,999	36	46	-21.7	123	147	-16.3
700,000 - 799,999	24	24	0.0	73	111	-34.2
800,000 - 899,999	13	20	-35.0	48	47	2.1
900,000 - 999,999	8	9	-11.1	61	31	96.8
1,000,000 - 1,249,999	8	9	-11.1	40	45	-11.1
1,250,000 - 1,499,999	13	11	18.2	37	43	-14.0
1,500,000 +	8	9	-11.1	38	41	-7.3
TOTALS	328	382	-14.1	1195	1290	-7.4

INVENTORY TREND



SALES TREND

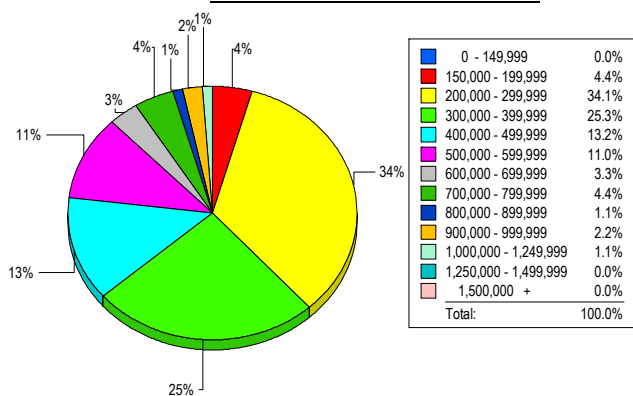
Contracts Ratified Per Month



CONTRACTS

Price Range	New This Month			Year-To-Date		
	2009	2008	% Change	2009	2008	% Change
0 - 149,999	0	0	0.0	0	0	0.0
150,000 - 199,999	3	0	300.0	3	0	300.0
200,000 - 299,999	36	24	50.0	36	24	50.0
300,000 - 399,999	40	66	-39.4	40	66	-39.4
400,000 - 499,999	29	24	20.8	29	24	20.8
500,000 - 599,999	23	19	21.1	23	19	21.1
600,000 - 699,999	6	13	-53.8	6	13	-53.8
700,000 - 799,999	4	10	-60.0	4	10	-60.0
800,000 - 899,999	2	5	-60.0	2	5	-60.0
900,000 - 999,999	0	2	-100.0	0	2	-100.0
1,000,000 - 1,249,999	2	2	0.0	2	2	0.0
1,250,000 - 1,499,999	3	1	200.0	3	1	200.0
1,500,000 +	0	0	0.0	0	0	0.0
TOTALS	148	166	-10.8	148	166	-10.8

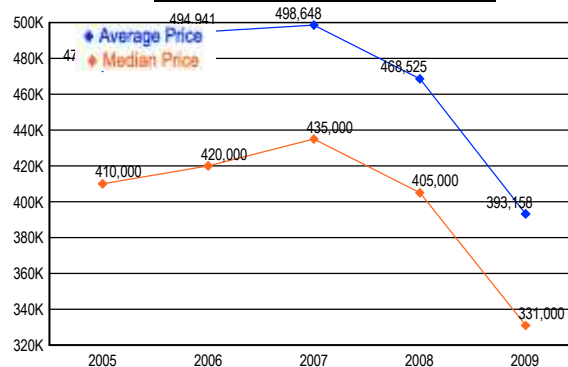
MARKET BY PRICE RANGE



SETTLEMENTS

Price Range	New This Month			Year-to-Date		
	2009	2008	% Change	2009	2008	% Change
0 - 149,999	0	0	0.0	0	0	0.0
150,000 - 199,999	4	1	300.0	4	1	300.0
200,000 - 299,999	31	19	63.2	31	19	63.2
300,000 - 399,999	23	31	-25.8	23	31	-25.8
400,000 - 499,999	12	22	-45.5	12	22	-45.5
500,000 - 599,999	10	9	11.1	10	9	11.1
600,000 - 699,999	3	5	-40.0	3	5	-40.0
700,000 - 799,999	4	2	100.0	4	2	100.0
800,000 - 899,999	1	7	-85.7	1	7	-85.7
900,000 - 999,999	2	2	0.0	2	2	0.0
1,000,000 - 1,249,999	1	3	-66.7	1	3	-66.7
1,250,000 - 1,499,999	0	1	-100.0	0	1	-100.0
1,500,000 +	0	0	0.0	0	0	0.0
TOTALS	91	102	-10.8	91	102	-10.8

AVERAGE & MEDIAN PRICE



DATA SOURCE: Metropolitan Regional Information Systems, Inc. (MRIS)

NOTES: Properties not listed through this Multiple Listing Service are not reflected. The term "sales" represents ratified purchase contracts. Current year information is preliminary and subject to revision. Current year-to-date contract information may not equal the sum of the monthly contract totals reported in