

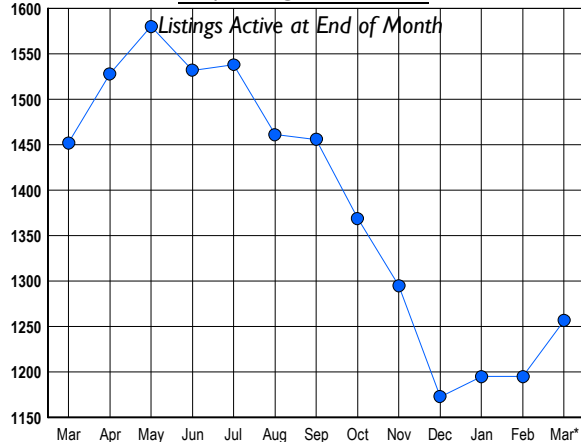
# HOWARD COUNTY Residential Market Report

# HOUSING REPORT Single Family Homes March 2009

## LISTINGS

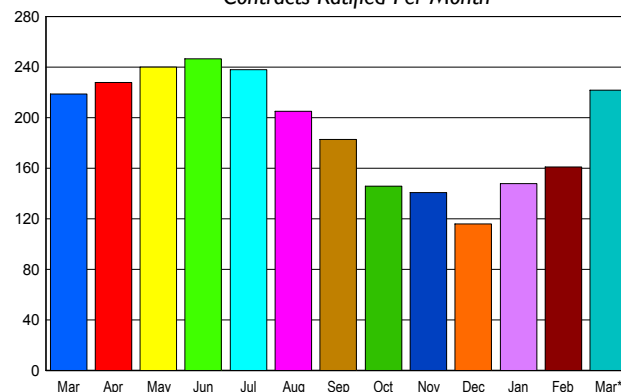
Prices Range	New This Month			Total Actives		
	2009	2008	% Change	2009	2008	% Change
0 - 149,999	2	3	-33.3	5	4	25.0
150,000 - 199,999	6	0	600.0	21	2	950.0
200,000 - 299,999	55	54	1.9	178	143	24.5
300,000 - 399,999	85	128	-33.6	223	336	-33.6
400,000 - 499,999	61	85	-28.2	185	260	-28.8
500,000 - 599,999	71	72	-1.4	182	170	7.1
600,000 - 699,999	48	51	-5.9	138	166	-16.9
700,000 - 799,999	25	38	-34.2	90	119	-24.4
800,000 - 899,999	17	25	-32.0	56	57	-1.8
900,000 - 999,999	16	18	-11.1	60	55	9.1
1,000,000 - 1,249,999	14	14	0.0	46	46	0.0
1,250,000 - 1,499,999	10	5	100.0	40	42	-4.8
1,500,000 +	8	12	-33.3	33	52	-36.5
<b>TOTALS</b>	<b>418</b>	<b>505</b>	<b>-17.2</b>	<b>1257</b>	<b>1452</b>	<b>-13.4</b>

## INVENTORY TREND



## SALES TREND

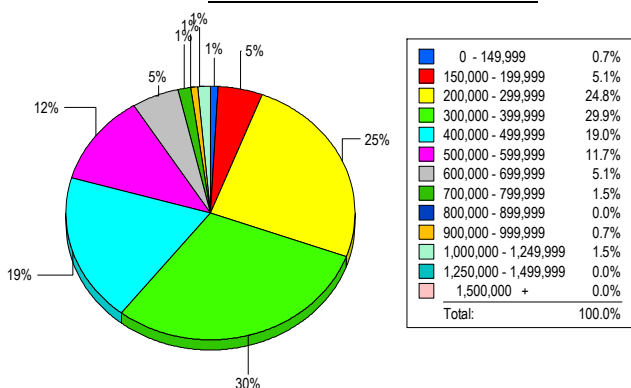
Contracts Ratified Per Month



## CONTRACTS

Price Range	New This Month			Year-To-Date		
	2009	2008	% Change	2009	2008	% Change
0 - 149,999	0	2	-100.0	0	2	-100.0
150,000 - 199,999	4	1	300.0	12	1	1,100.0
200,000 - 299,999	55	28	96.4	125	75	66.7
300,000 - 399,999	58	77	-24.7	144	200	-28.0
400,000 - 499,999	40	39	2.6	88	93	-5.4
500,000 - 599,999	36	20	80.0	77	64	20.3
600,000 - 699,999	14	26	-46.2	34	52	-34.6
700,000 - 799,999	6	12	-50.0	12	33	-63.6
800,000 - 899,999	1	5	-80.0	6	19	-68.4
900,000 - 999,999	3	2	50.0	4	6	-33.3
1,000,000 - 1,249,999	1	4	-75.0	6	10	-40.0
1,250,000 - 1,499,999	3	2	50.0	8	6	33.3
1,500,000 +	1	1	0.0	2	2	0.0
<b>TOTALS</b>	<b>222</b>	<b>219</b>	<b>1.4</b>	<b>518</b>	<b>563</b>	<b>-8.0</b>

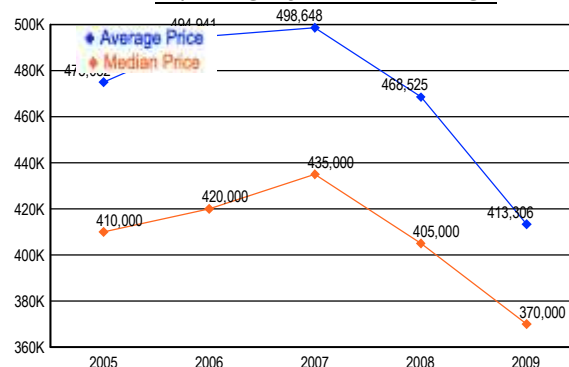
## MARKET BY PRICE RANGE



## SETTLEMENTS

Price Range	New This Month			Year-to-Date		
	2009	2008	% Change	2009	2008	% Change
0 - 149,999	1	0	100.0	1	0	100.0
150,000 - 199,999	7	1	600.0	12	2	500.0
200,000 - 299,999	34	19	78.9	88	59	49.2
300,000 - 399,999	41	48	-14.6	96	139	-30.9
400,000 - 499,999	26	25	4.0	58	79	-26.6
500,000 - 599,999	16	19	-15.8	39	44	-11.4
600,000 - 699,999	7	9	-22.2	19	26	-26.9
700,000 - 799,999	2	6	-66.7	9	14	-35.7
800,000 - 899,999	0	5	-100.0	3	17	-82.4
900,000 - 999,999	1	0	100.0	4	4	0.0
1,000,000 - 1,249,999	2	0	200.0	7	5	40.0
1,250,000 - 1,499,999	0	1	-100.0	2	3	-33.3
1,500,000 +	0	0	0.0	0	0	0.0
<b>TOTALS</b>	<b>137</b>	<b>133</b>	<b>3.0</b>	<b>338</b>	<b>392</b>	<b>-13.8</b>

## AVERAGE & MEDIAN PRICE



DATA SOURCE: Metropolitan Regional Information Systems, Inc. (MRIS)

NOTES: Properties not listed through this Multiple Listing Service are not reflected. The term "sales" represents ratified purchase contracts. Current year information is preliminary and subject to revision. Current year-to-date contract information may not equal the sum of the monthly contract totals reported in