

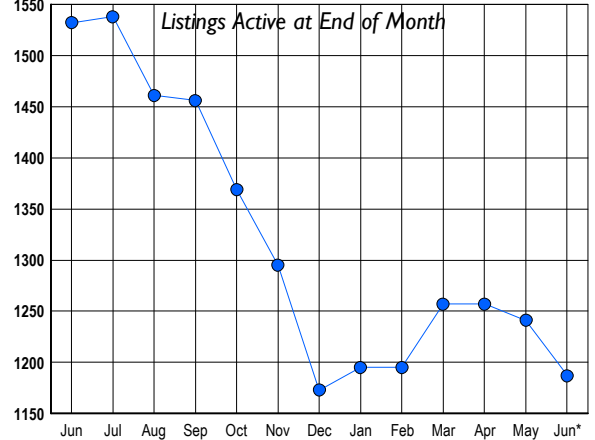
HOWARD COUNTY Residential Market Report

HOUSING REPORT Single Family Homes June 2009

LISTINGS

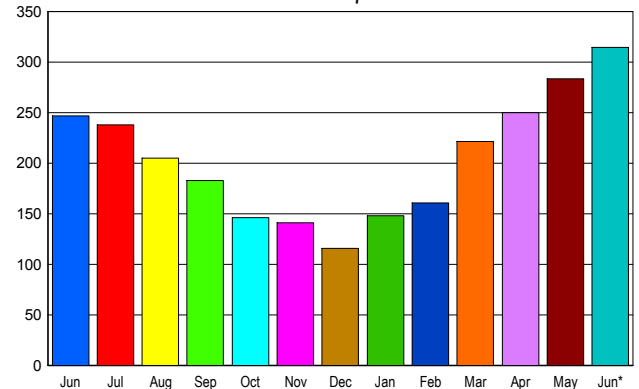
Prices Range	New This Month			Total Actives		
	2009	2008	% Change	2009	2008	% Change
0 - 149,999	1	0	100.0	8	3	166.7
150,000 - 199,999	5	2	150.0	14	6	133.3
200,000 - 299,999	57	63	-9.5	132	172	-23.3
300,000 - 399,999	95	102	-6.9	210	342	-38.6
400,000 - 499,999	75	84	-10.7	177	253	-30.0
500,000 - 599,999	40	51	-21.6	158	188	-16.0
600,000 - 699,999	44	42	4.8	155	173	-10.4
700,000 - 799,999	26	26	0.0	91	101	-9.9
800,000 - 899,999	19	11	72.7	65	73	-11.0
900,000 - 999,999	7	12	-41.7	50	59	-15.3
1,000,000 - 1,249,999	9	14	-35.7	41	60	-31.7
1,250,000 - 1,499,999	4	15	-73.3	45	46	-2.2
1,500,000 +	7	10	-30.0	41	56	-26.8
TOTALS	389	432	-10.0	1187	1532	-22.5

INVENTORY TREND



SALES TREND

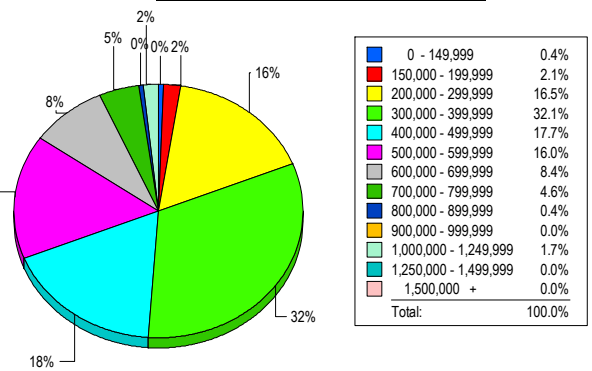
Contracts Ratified Per Month



CONTRACTS

Price Range	New This Month			Year-To-Date		
	2009	2008	% Change	2009	2008	% Change
0 - 149,999	0	0	0.0	2	3	-33.3
150,000 - 199,999	13	2	550.0	41	5	720.0
200,000 - 299,999	73	43	69.8	296	183	61.7
300,000 - 399,999	82	70	17.1	367	401	-8.5
400,000 - 499,999	56	51	9.8	229	228	0.4
500,000 - 599,999	39	27	44.4	183	153	19.6
600,000 - 699,999	28	25	12.0	115	131	-12.2
700,000 - 799,999	13	12	8.3	48	74	-35.1
800,000 - 899,999	6	10	-40.0	16	44	-63.6
900,000 - 999,999	2	2	0.0	9	16	-43.8
1,000,000 - 1,249,999	2	1	100.0	11	17	-35.3
1,250,000 - 1,499,999	0	2	-100.0	9	11	-18.2
1,500,000 +	1	2	-50.0	3	11	-72.7
TOTALS	315	247	27.5	1329	1277	4.1

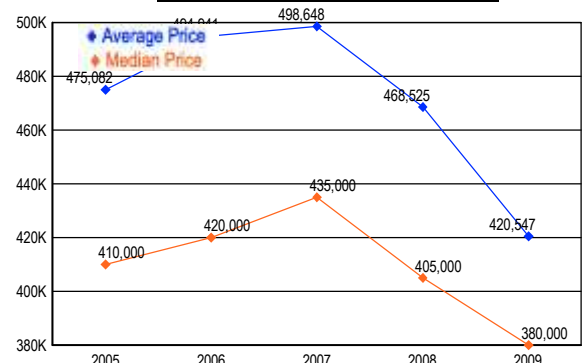
MARKET BY PRICE RANGE



SETTLEMENTS

Price Range	New This Month			Year-to-Date		
	2009	2008	% Change	2009	2008	% Change
0 - 149,999	1	2	-50.0	3	3	0.0
150,000 - 199,999	5	0	500.0	27	3	800.0
200,000 - 299,999	39	24	62.5	216	163	32.5
300,000 - 399,999	76	72	5.6	277	349	-20.6
400,000 - 499,999	42	43	-2.3	173	202	-14.4
500,000 - 599,999	38	29	31.0	131	124	5.6
600,000 - 699,999	20	34	-41.2	70	99	-29.3
700,000 - 799,999	11	10	10.0	25	48	-47.9
800,000 - 899,999	1	6	-83.3	7	37	-81.1
900,000 - 999,999	0	2	-100.0	5	14	-64.3
1,000,000 - 1,249,999	4	1	300.0	13	15	-13.3
1,250,000 - 1,499,999	0	2	-100.0	3	6	-50.0
1,500,000 +	0	0	0.0	3	5	-40.0
TOTALS	237	225	5.3	953	1068	-10.8

AVERAGE & MEDIAN PRICE



DATA SOURCE: Metropolitan Regional Information Systems, Inc. (MRIS)

NOTES: Properties not listed through this Multiple Listing Service are not reflected. The term "sales" represents ratified purchase contracts. Current year information is preliminary and subject to revision. Current year-to-date contract information may not equal the sum of the monthly contract totals reported in