

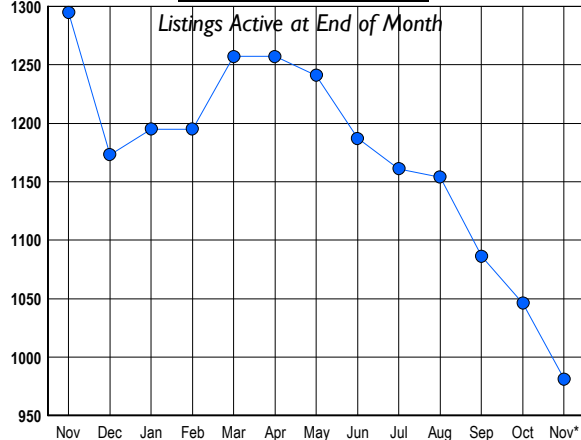
HOWARD COUNTY Residential Market Report

HOUSING REPORT Single Family Homes November 2009

LISTINGS

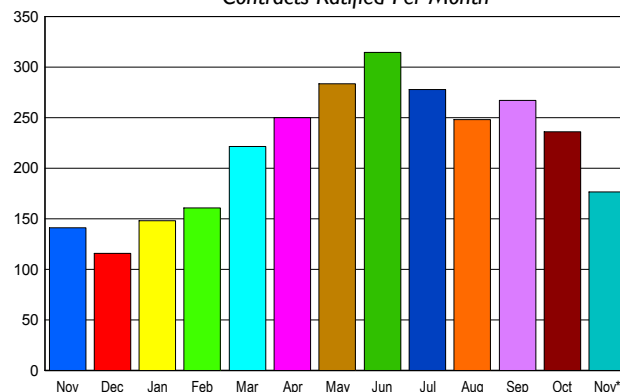
Prices Range	New This Month			Total Actives		
	2009	2008	% Change	2009	2008	% Change
0 - 149,999	2	1	100.0	9	4	125.0
150,000 - 199,999	9	4	125.0	20	8	150.0
200,000 - 299,999	34	38	-10.5	118	202	-41.6
300,000 - 399,999	53	58	-8.6	167	266	-37.2
400,000 - 499,999	38	46	-17.4	145	206	-29.6
500,000 - 599,999	24	30	-20.0	129	161	-19.9
600,000 - 699,999	13	20	-35.0	113	125	-9.6
700,000 - 799,999	14	16	-12.5	71	87	-18.4
800,000 - 899,999	7	8	-12.5	59	55	7.3
900,000 - 999,999	4	9	-55.6	48	53	-9.4
1,000,000 - 1,249,999	3	11	-72.7	29	40	-27.5
1,250,000 - 1,499,999	12	2	500.0	34	49	-30.6
1,500,000 +	1	5	-80.0	39	39	0.0
TOTALS	214	248	-13.7	981	1295	-24.2

INVENTORY TREND



SALES TREND

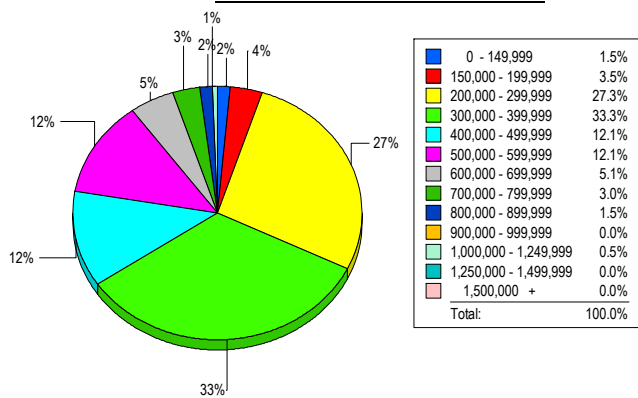
Contracts Ratified Per Month



CONTRACTS

Price Range	New This Month			Year-To-Date		
	2009	2008	% Change	2009	2008	% Change
0 - 149,999	0	0	0.0	9	7	28.6
150,000 - 199,999	7	2	250.0	76	12	533.3
200,000 - 299,999	36	30	20.0	537	342	57.0
300,000 - 399,999	45	37	21.6	659	628	4.9
400,000 - 499,999	31	26	19.2	411	374	9.9
500,000 - 599,999	21	17	23.5	296	256	15.6
600,000 - 699,999	13	14	-7.1	212	228	-7.0
700,000 - 799,999	9	7	28.6	87	117	-25.6
800,000 - 899,999	8	2	300.0	42	59	-28.8
900,000 - 999,999	0	2	-100.0	13	24	-45.8
1,000,000 - 1,249,999	4	4	0.0	22	35	-37.1
1,250,000 - 1,499,999	2	0	200.0	14	16	-12.5
1,500,000 +	1	0	100.0	6	12	-50.0
TOTALS	177	141	25.5	2384	2110	13.0

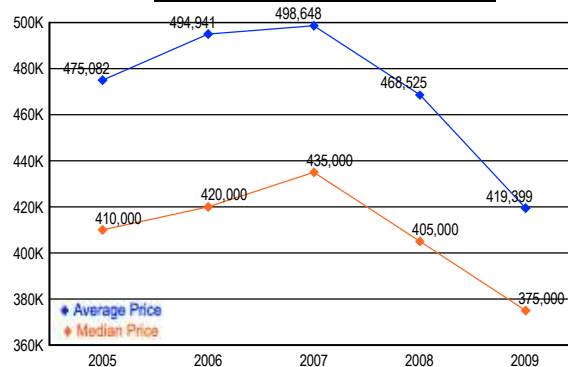
MARKET BY PRICE RANGE



SETTLEMENTS

Price Range	New This Month			Year-to-Date		
	2009	2008	% Change	2009	2008	% Change
0 - 149,999	3	0	300.0	12	6	100.0
150,000 - 199,999	7	2	250.0	61	11	454.5
200,000 - 299,999	54	20	170.0	497	335	48.4
300,000 - 399,999	66	32	106.3	618	625	-1.1
400,000 - 499,999	24	19	26.3	362	367	-1.4
500,000 - 599,999	24	11	118.2	281	258	8.9
600,000 - 699,999	10	7	42.9	183	196	-6.6
700,000 - 799,999	6	6	0.0	55	111	-50.5
800,000 - 899,999	3	1	200.0	28	56	-50.0
900,000 - 999,999	0	0	0.0	16	21	-23.8
1,000,000 - 1,249,999	1	0	100.0	22	32	-31.3
1,250,000 - 1,499,999	0	0	0.0	5	10	-50.0
1,500,000 +	0	0	0.0	4	11	-63.6
TOTALS	198	98	102.0	2144	2039	5.1

AVERAGE & MEDIAN PRICE



DATA SOURCE: Metropolitan Regional Information Systems, Inc. (MRIS)

NOTES: Properties not listed through this Multiple Listing Service are not reflected. The term "sales" represents ratified purchase contracts. Current year information is preliminary and subject to revision. Current year-to-date contract information may not equal the sum of the monthly contract totals reported in