

# HOWARD COUNTY

## Residential Market Report

# HOUSING REPORT

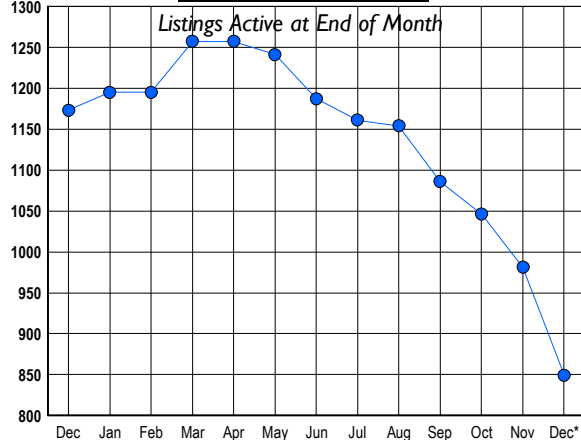
## Single Family Homes

### December 2009

### LISTINGS

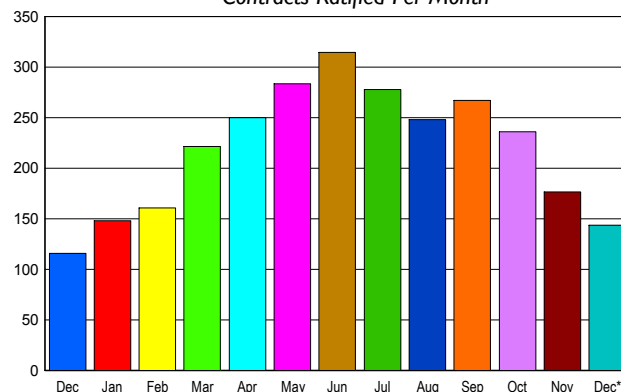
Prices Range	New This Month			Total Actives		
	2009	2008	% Change	2009	2008	% Change
0 - 149,999	1	1	0.0	9	3	200.0
150,000 - 199,999	6	1	500.0	15	7	114.3
200,000 - 299,999	35	49	-28.6	103	189	-45.5
300,000 - 399,999	35	44	-20.5	152	237	-35.9
400,000 - 499,999	34	26	30.8	140	173	-19.1
500,000 - 599,999	19	30	-36.7	106	148	-28.4
600,000 - 699,999	16	22	-27.3	81	121	-33.1
700,000 - 799,999	12	13	-7.7	62	75	-17.3
800,000 - 899,999	6	12	-50.0	45	51	-11.8
900,000 - 999,999	2	14	-85.7	45	58	-22.4
1,000,000 - 1,249,999	6	1	500.0	27	36	-25.0
1,250,000 - 1,499,999	3	3	0.0	29	40	-27.5
1,500,000 +	2	6	-66.7	35	35	0.0
<b>TOTALS</b>	<b>177</b>	<b>222</b>	<b>-20.3</b>	<b>849</b>	<b>1173</b>	<b>-27.6</b>

### INVENTORY TREND



### SALES TREND

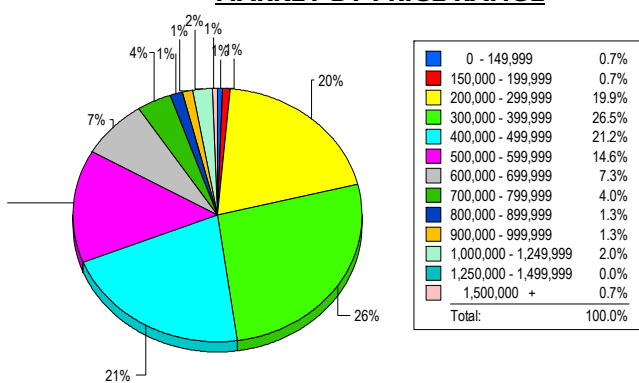
Contracts Ratified Per Month



### CONTRACTS

Price Range	New This Month			Year-To-Date		
	2009	2008	% Change	2009	2008	% Change
0 - 149,999	1	1	0.0	10	8	25.0
150,000 - 199,999	10	6	66.7	83	18	361.1
200,000 - 299,999	32	32	0.0	561	372	50.8
300,000 - 399,999	38	25	52.0	687	653	5.2
400,000 - 499,999	15	16	-6.3	426	391	9.0
500,000 - 599,999	16	13	23.1	310	267	16.1
600,000 - 699,999	17	11	54.5	228	237	-3.8
700,000 - 799,999	7	6	16.7	94	122	-23.0
800,000 - 899,999	3	2	50.0	45	62	-27.4
900,000 - 999,999	3	1	200.0	16	27	-40.7
1,000,000 - 1,249,999	2	1	100.0	26	33	-21.2
1,250,000 - 1,499,999	0	1	-100.0	14	18	-22.2
1,500,000 +	0	1	-100.0	7	12	-41.7
<b>TOTALS</b>	<b>144</b>	<b>116</b>	<b>24.1</b>	<b>2507</b>	<b>2220</b>	<b>12.9</b>

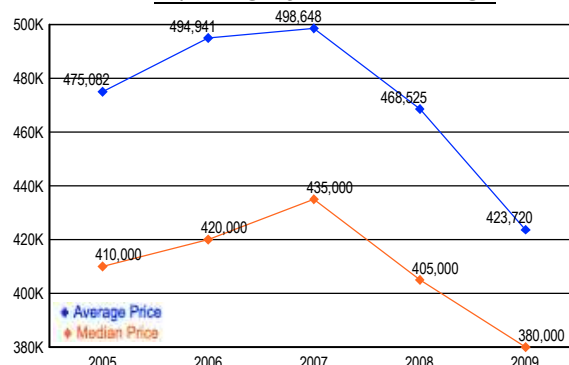
### MARKET BY PRICE RANGE



### SETTLEMENTS

Price Range	New This Month			Year-to-Date		
	2009	2008	% Change	2009	2008	% Change
0 - 149,999	1	0	100.0	13	6	116.7
150,000 - 199,999	1	0	100.0	62	11	463.6
200,000 - 299,999	30	32	-6.3	530	370	43.2
300,000 - 399,999	40	29	37.9	661	657	0.6
400,000 - 499,999	32	27	18.5	395	394	0.3
500,000 - 599,999	22	19	15.8	303	278	9.0
600,000 - 699,999	11	12	-8.3	194	209	-7.2
700,000 - 799,999	6	2	200.0	61	113	-46.0
800,000 - 899,999	2	5	-60.0	30	61	-50.8
900,000 - 999,999	2	0	200.0	18	21	-14.3
1,000,000 - 1,249,999	3	0	300.0	28	32	-12.5
1,250,000 - 1,499,999	0	2	-100.0	5	12	-58.3
1,500,000 +	1	1	0.0	6	12	-50.0
<b>TOTALS</b>	<b>151</b>	<b>129</b>	<b>17.1</b>	<b>2306</b>	<b>2176</b>	<b>6.0</b>

### AVERAGE & MEDIAN PRICE



DATA SOURCE: Metropolitan Regional Information Systems, Inc. (MRIS)

NOTES: Properties not listed through this Multiple Listing Service are not reflected. The term "sales" represents ratified purchase contracts. Current year information is preliminary and subject to revision. Current year-to-date contract information may not equal the sum of the monthly contract totals reported in