

HOWARD COUNTY

Residential Market Report

HOUSING REPORT

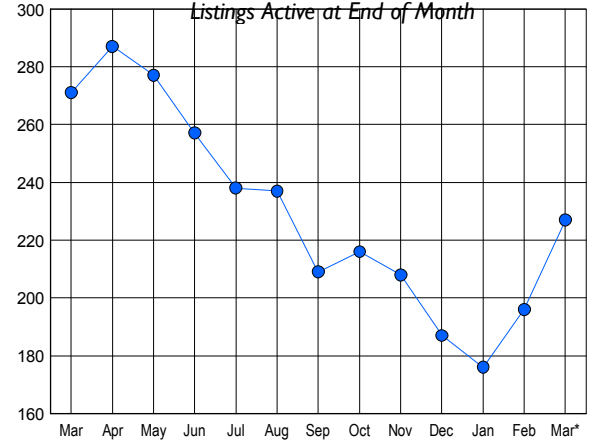
CONDO & COOPS

March 2010

LISTINGS

Price Range	New This Month			Total Actives		
	2010	2009	% Change	2010	2009	% Change
0 - 149,999	8	11	-27.3	35	26	34.6
150,000 - 199,999	19	13	46.2	52	55	-5.5
200,000 - 299,999	44	30	46.7	74	99	-25.3
300,000 - 399,999	19	16	18.8	35	54	-35.2
400,000 - 499,999	11	7	57.1	17	21	-19.0
500,000 - 599,999	4	1	300.0	11	13	-15.4
600,000 - 699,999	0	1	-100.0	3	1	200.0
700,000 - 799,999	0	0	0.0	0	2	-100.0
800,000 - 899,999	0	0	0.0	0	0	0.0
900,000 - 999,999	0	0	0.0	0	0	0.0
1,000,000 - 1,249,999	0	0	0.0	0	0	0.0
1,250,000 - 1,499,999	0	0	0.0	0	0	0.0
1,500,000 +	0	0	0.0	0	0	0.0
TOTALS	105	79	32.9	227	271	-16.2

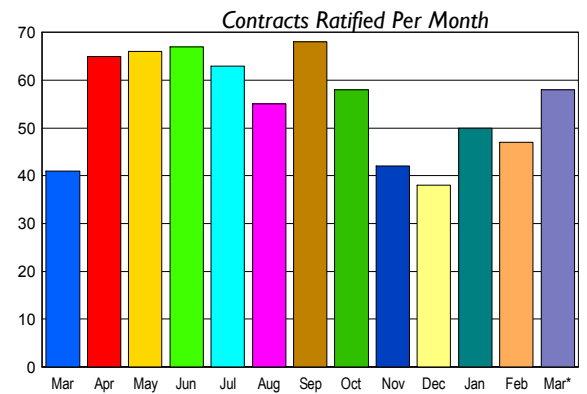
INVENTORY TREND



CONTRACTS

Price Range	New This Month			Year-To-Date		
	2010	2009	% Change	2010	2009	% Change
0 - 149,999	4	1	300.0	18	5	260.0
150,000 - 199,999	15	8	87.5	35	26	34.6
200,000 - 299,999	28	23	21.7	64	65	-1.5
300,000 - 399,999	10	8	25.0	21	17	23.5
400,000 - 499,999	1	0	100.0	5	5	0.0
500,000 - 599,999	0	1	-100.0	0	1	-100.0
600,000 - 699,999	0	0	0.0	0	0	0.0
700,000 - 799,999	0	0	0.0	0	0	0.0
800,000 - 899,999	0	0	0.0	0	1	-100.0
900,000 - 999,999	0	0	0.0	0	0	0.0
1,000,000 - 1,249,999	0	0	0.0	0	0	0.0
1,250,000 - 1,499,999	0	0	0.0	0	0	0.0
1,500,000 +	0	0	0.0	0	0	0.0
TOTALS	58	41	41.5	143	120	19.2

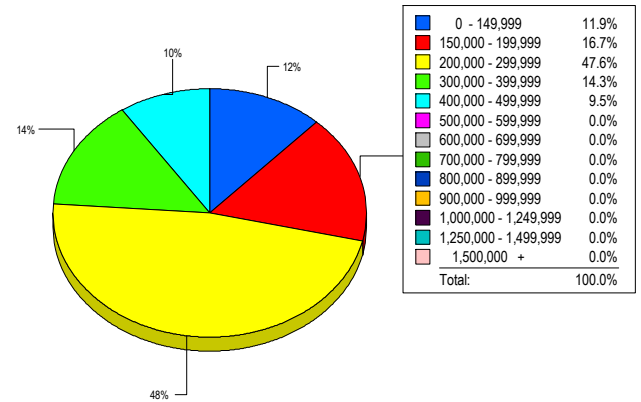
SALES TREND



SETTLEMENTS

Price Range	New This Month			Year-To-Date		
	2010	2009	% Change	2010	2009	% Change
0 - 149,999	5	4	25.0	12	10	20.0
150,000 - 199,999	7	10	-30.0	16	27	-40.7
200,000 - 299,999	20	14	42.9	47	34	38.2
300,000 - 399,999	6	3	100.0	13	11	18.2
400,000 - 499,999	4	2	100.0	10	7	42.9
500,000 - 599,999	0	1	-100.0	1	1	0.0
600,000 - 699,999	0	0	0.0	0	0	0.0
700,000 - 799,999	0	0	0.0	0	0	0.0
800,000 - 899,999	0	0	0.0	0	1	-100.0
900,000 - 999,999	0	0	0.0	0	0	0.0
1,000,000 - 1,249,999	0	0	0.0	0	0	0.0
1,250,000 - 1,499,999	0	0	0.0	0	0	0.0
1,500,000 +	0	0	0.0	0	0	0.0
TOTALS	42	34	23.5	99	91	8.8

MARKET BY PRICE RANGE



AVERAGE & MEDIAN PRICE



DATA SOURCE: Metropolitan Regional Information Systems, Inc. (MRIS)

NOTES: Properties not listed through this Multiple Listing Service are not reflected. The term "sales" represents ratified purchase contracts. Current year information is preliminary and subject to revision. Current year-to-date contract information may not equal the sum of the monthly contract totals reported in