

HOWARD COUNTY

Residential Market Report

HOUSING REPORT

CONDO & COOPS

April 2010

LISTINGS

| Price Range | New This Month | | | Total Actives | | |
|-----------------------|----------------|-----------|------------|---------------|------------|--------------|
| | 2010 | 2009 | % Change | 2010 | 2009 | % Change |
| 0 - 149,999 | 9 | 5 | 80.0 | 28 | 25 | 12.0 |
| 150,000 - 199,999 | 26 | 11 | 136.4 | 48 | 52 | -7.7 |
| 200,000 - 299,999 | 39 | 45 | -13.3 | 72 | 110 | -34.5 |
| 300,000 - 399,999 | 15 | 22 | -31.8 | 39 | 60 | -35.0 |
| 400,000 - 499,999 | 5 | 8 | -37.5 | 11 | 23 | -52.2 |
| 500,000 - 599,999 | 4 | 6 | -33.3 | 10 | 14 | -28.6 |
| 600,000 - 699,999 | 1 | 0 | 100.0 | 3 | 1 | 200.0 |
| 700,000 - 799,999 | 0 | 0 | 0.0 | 0 | 2 | -100.0 |
| 800,000 - 899,999 | 0 | 0 | 0.0 | 0 | 0 | 0.0 |
| 900,000 - 999,999 | 0 | 0 | 0.0 | 0 | 0 | 0.0 |
| 1,000,000 - 1,249,999 | 0 | 0 | 0.0 | 0 | 0 | 0.0 |
| 1,250,000 - 1,499,999 | 0 | 0 | 0.0 | 0 | 0 | 0.0 |
| 1,500,000 + | 0 | 0 | 0.0 | 0 | 0 | 0.0 |
| TOTALS | 99 | 97 | 2.1 | 211 | 287 | -26.5 |

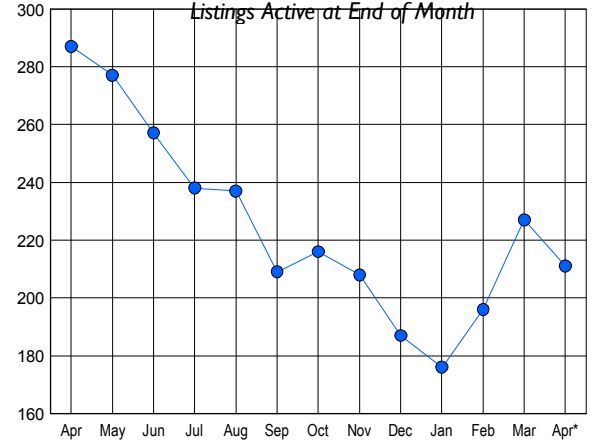
CONTRACTS

| Price Range | New This Month | | | Year-To-Date | | |
|-----------------------|----------------|-----------|-------------|--------------|------------|-------------|
| | 2010 | 2009 | % Change | 2010 | 2009 | % Change |
| 0 - 149,999 | 11 | 9 | 22.2 | 29 | 15 | 93.3 |
| 150,000 - 199,999 | 23 | 15 | 53.3 | 56 | 41 | 36.6 |
| 200,000 - 299,999 | 39 | 23 | 69.6 | 97 | 87 | 11.5 |
| 300,000 - 399,999 | 11 | 13 | -15.4 | 28 | 29 | -3.4 |
| 400,000 - 499,999 | 9 | 5 | 80.0 | 14 | 10 | 40.0 |
| 500,000 - 599,999 | 1 | 0 | 100.0 | 1 | 1 | 0.0 |
| 600,000 - 699,999 | 0 | 0 | 0.0 | 0 | 0 | 0.0 |
| 700,000 - 799,999 | 0 | 0 | 0.0 | 0 | 0 | 0.0 |
| 800,000 - 899,999 | 0 | 0 | 0.0 | 0 | 1 | -100.0 |
| 900,000 - 999,999 | 0 | 0 | 0.0 | 0 | 0 | 0.0 |
| 1,000,000 - 1,249,999 | 0 | 0 | 0.0 | 0 | 0 | 0.0 |
| 1,250,000 - 1,499,999 | 0 | 0 | 0.0 | 0 | 0 | 0.0 |
| 1,500,000 + | 0 | 0 | 0.0 | 0 | 0 | 0.0 |
| TOTALS | 94 | 65 | 44.6 | 225 | 184 | 22.3 |

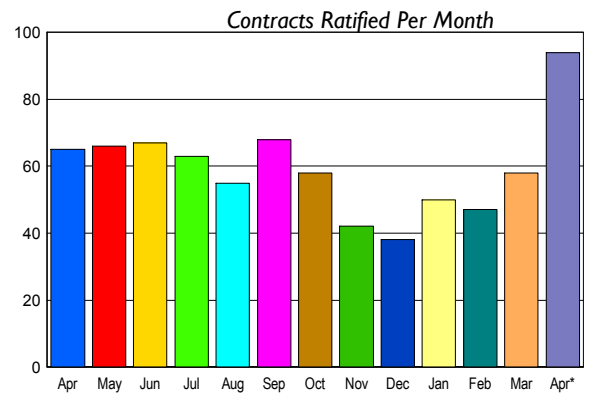
SETTLEMENTS

| Price Range | New This Month | | | Year-To-Date | | |
|-----------------------|----------------|-----------|-------------|--------------|------------|-------------|
| | 2010 | 2009 | % Change | 2010 | 2009 | % Change |
| 0 - 149,999 | 3 | 2 | 50.0 | 15 | 12 | 25.0 |
| 150,000 - 199,999 | 12 | 10 | 20.0 | 28 | 37 | -24.3 |
| 200,000 - 299,999 | 19 | 16 | 18.8 | 67 | 51 | 31.4 |
| 300,000 - 399,999 | 5 | 6 | -16.7 | 18 | 18 | 0.0 |
| 400,000 - 499,999 | 1 | 0 | 100.0 | 12 | 7 | 71.4 |
| 500,000 - 599,999 | 0 | 0 | 0.0 | 1 | 1 | 0.0 |
| 600,000 - 699,999 | 0 | 0 | 0.0 | 0 | 0 | 0.0 |
| 700,000 - 799,999 | 0 | 0 | 0.0 | 0 | 0 | 0.0 |
| 800,000 - 899,999 | 0 | 0 | 0.0 | 0 | 1 | -100.0 |
| 900,000 - 999,999 | 0 | 0 | 0.0 | 0 | 0 | 0.0 |
| 1,000,000 - 1,249,999 | 0 | 0 | 0.0 | 0 | 0 | 0.0 |
| 1,250,000 - 1,499,999 | 0 | 0 | 0.0 | 0 | 0 | 0.0 |
| 1,500,000 + | 0 | 0 | 0.0 | 0 | 0 | 0.0 |
| TOTALS | 40 | 34 | 17.6 | 141 | 127 | 11.0 |

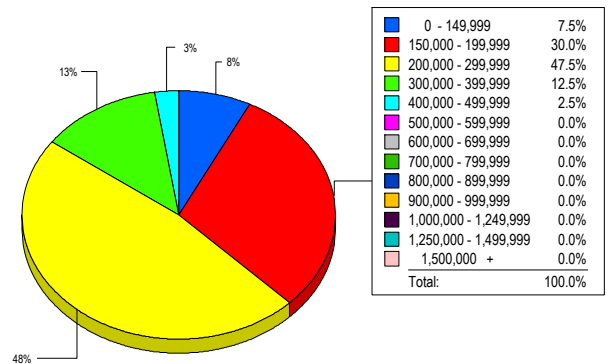
INVENTORY TREND



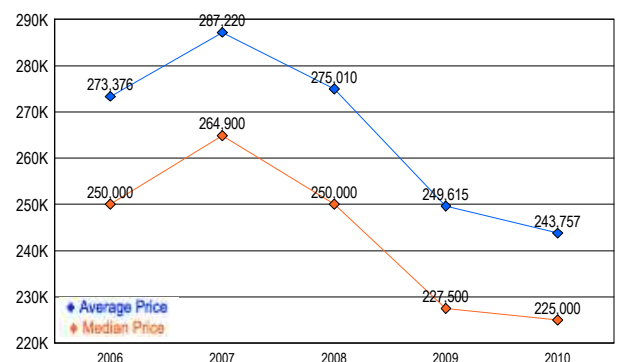
SALES TREND



MARKET BY PRICE RANGE



AVERAGE & MEDIAN PRICE



DATA SOURCE: Metropolitan Regional Information Systems, Inc. (MRIS)

NOTES: Properties not listed through this Multiple Listing Service are not reflected. The term "sales" represents ratified purchase contracts. Current year information is preliminary and subject to revision. Current year-to-date contract information may not equal the sum of the monthly contract totals reported in