

HOWARD COUNTY

Residential Market Report

HOUSING REPORT

CONDO & COOPS

June 2010

LISTINGS

Price Range	New This Month			Total Actives		
	2010	2009	% Change	2010	2009	% Change
0 - 149,999	7	4	75.0	33	22	50.0
150,000 - 199,999	12	18	-33.3	56	52	7.7
200,000 - 299,999	43	36	19.4	87	81	7.4
300,000 - 399,999	19	37	-48.6	45	62	-27.4
400,000 - 499,999	10	14	-28.6	16	25	-36.0
500,000 - 599,999	0	0	0.0	8	12	-33.3
600,000 - 699,999	1	0	100.0	5	2	150.0
700,000 - 799,999	0	0	0.0	0	1	-100.0
800,000 - 899,999	0	0	0.0	0	0	0.0
900,000 - 999,999	0	0	0.0	0	0	0.0
1,000,000 - 1,249,999	0	0	0.0	0	0	0.0
1,250,000 - 1,499,999	0	0	0.0	0	0	0.0
1,500,000 +	0	0	0.0	0	0	0.0
TOTALS	92	109	-15.6	250	257	-2.7

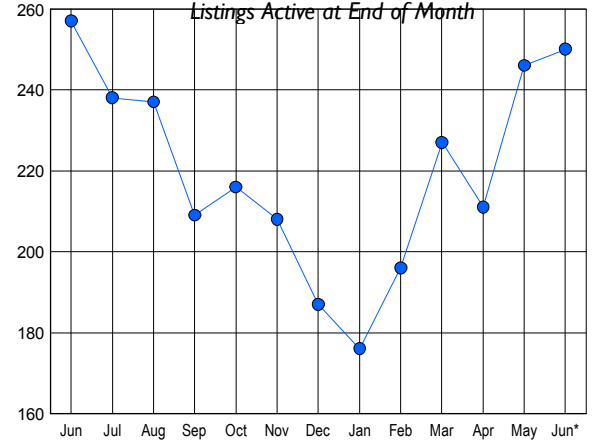
CONTRACTS

Price Range	New This Month			Year-To-Date		
	2010	2009	% Change	2010	2009	% Change
0 - 149,999	5	4	25.0	34	27	25.9
150,000 - 199,999	8	17	-52.9	70	67	4.5
200,000 - 299,999	22	25	-12.0	126	137	-8.0
300,000 - 399,999	8	12	-33.3	40	51	-21.6
400,000 - 499,999	5	6	-16.7	19	17	11.8
500,000 - 599,999	1	2	-50.0	2	5	-60.0
600,000 - 699,999	0	1	-100.0	0	1	-100.0
700,000 - 799,999	0	0	0.0	0	0	0.0
800,000 - 899,999	0	0	0.0	0	1	-100.0
900,000 - 999,999	0	0	0.0	0	0	0.0
1,000,000 - 1,249,999	0	0	0.0	0	0	0.0
1,250,000 - 1,499,999	0	0	0.0	0	0	0.0
1,500,000 +	0	0	0.0	0	0	0.0
TOTALS	49	67	-26.9	291	306	-4.9

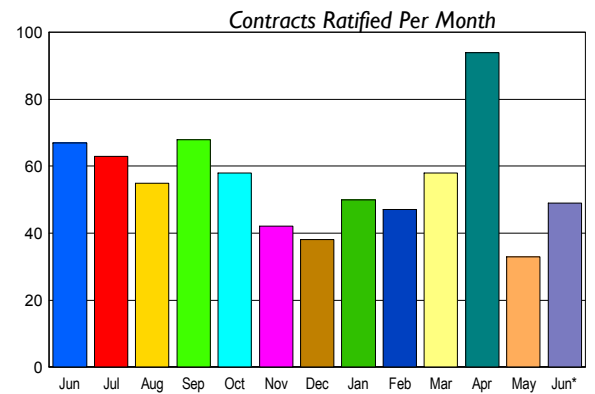
SETTLEMENTS

Price Range	New This Month			Year-To-Date		
	2010	2009	% Change	2010	2009	% Change
0 - 149,999	5	6	-16.7	26	23	13.0
150,000 - 199,999	12	8	50.0	56	53	5.7
200,000 - 299,999	19	28	-32.1	107	96	11.5
300,000 - 399,999	9	10	-10.0	33	40	-17.5
400,000 - 499,999	3	2	50.0	17	11	54.5
500,000 - 599,999	1	1	0.0	2	2	0.0
600,000 - 699,999	0	0	0.0	0	0	0.0
700,000 - 799,999	0	0	0.0	0	0	0.0
800,000 - 899,999	0	0	0.0	0	1	-100.0
900,000 - 999,999	0	0	0.0	0	0	0.0
1,000,000 - 1,249,999	0	0	0.0	0	0	0.0
1,250,000 - 1,499,999	0	0	0.0	0	0	0.0
1,500,000 +	0	0	0.0	0	0	0.0
TOTALS	49	55	-10.9	241	226	6.6

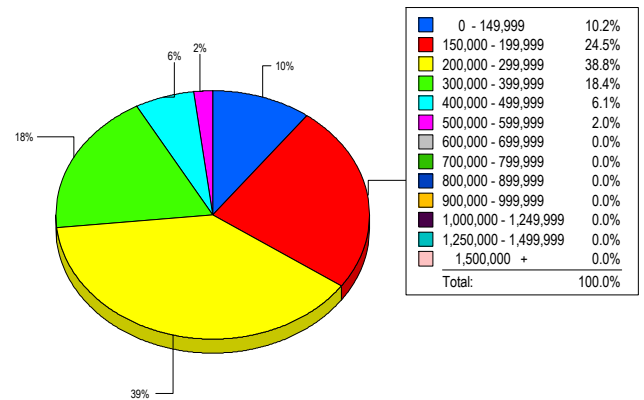
INVENTORY TREND



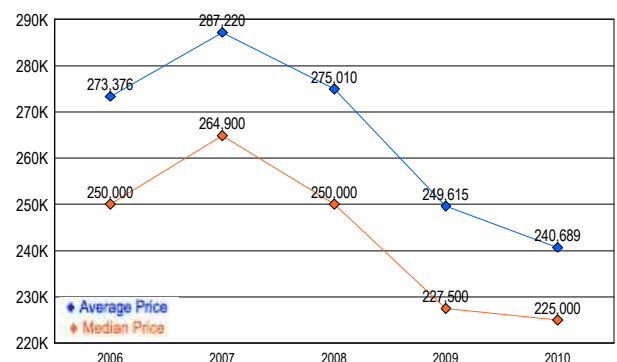
SALES TREND



MARKET BY PRICE RANGE



AVERAGE & MEDIAN PRICE



DATA SOURCE: Metropolitan Regional Information Systems, Inc. (MRIS)

NOTES: Properties not listed through this Multiple Listing Service are not reflected. The term "sales" represents ratified purchase contracts. Current year information is preliminary and subject to revision. Current year- to- date contract information may not equal the sum of the monthly contract totals reported in