

# HOWARD COUNTY

## Residential Market Report

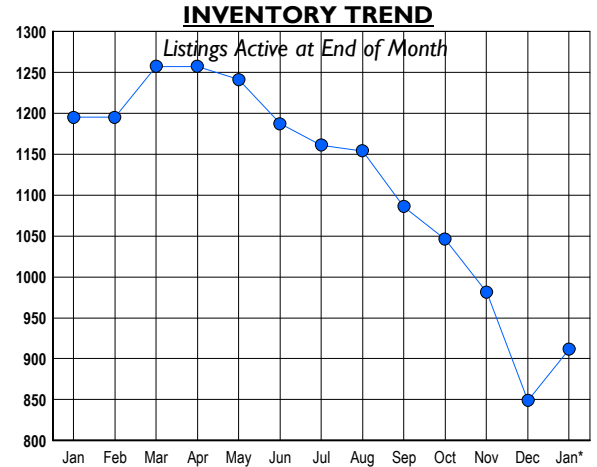
# HOUSING REPORT

## Single Family Homes

January 2010

### LISTINGS

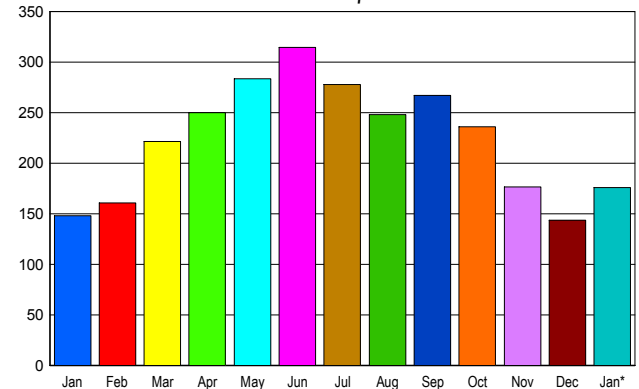
Prices Range	New This Month			Total Actives		
	2010	2009	% Change	2010	2009	% Change
0 - 149,999	0	1	-100.0	10	4	150.0
150,000 - 199,999	14	4	250.0	23	16	43.8
200,000 - 299,999	53	48	10.4	108	186	-41.9
300,000 - 399,999	61	63	-3.2	159	235	-32.3
400,000 - 499,999	47	55	-14.5	146	178	-18.0
500,000 - 599,999	36	47	-23.4	117	156	-25.0
600,000 - 699,999	32	36	-11.1	94	123	-23.6
700,000 - 799,999	16	24	-33.3	72	73	-1.4
800,000 - 899,999	7	13	-46.2	48	48	0.0
900,000 - 999,999	2	8	-75.0	48	61	-21.3
1,000,000 - 1,249,999	8	8	0.0	32	40	-20.0
1,250,000 - 1,499,999	3	13	-76.9	24	37	-35.1
1,500,000 +	3	8	-62.5	31	38	-18.4
<b>TOTALS</b>	<b>282</b>	<b>328</b>	<b>-14.0</b>	<b>912</b>	<b>1195</b>	<b>-23.7</b>



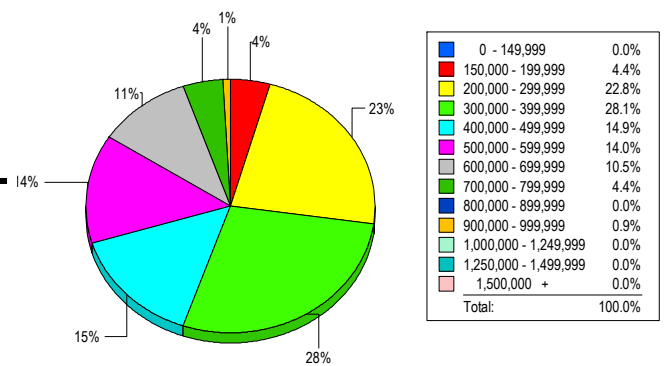
### CONTRACTS

Price Range	New This Month			Year-To-Date		
	2010	2009	% Change	2010	2009	% Change
0 - 149,999	0	0	0.0	0	0	0.0
150,000 - 199,999	9	3	200.0	9	3	200.0
200,000 - 299,999	40	36	11.1	40	36	11.1
300,000 - 399,999	44	40	10.0	44	40	10.0
400,000 - 499,999	34	29	17.2	34	29	17.2
500,000 - 599,999	20	23	-13.0	20	23	-13.0
600,000 - 699,999	15	6	150.0	15	6	150.0
700,000 - 799,999	5	4	25.0	5	4	25.0
800,000 - 899,999	2	2	0.0	2	2	0.0
900,000 - 999,999	2	0	200.0	2	0	200.0
1,000,000 - 1,249,999	2	2	0.0	2	2	0.0
1,250,000 - 1,499,999	1	3	-66.7	1	3	-66.7
1,500,000 +	2	0	200.0	2	0	200.0
<b>TOTALS</b>	<b>176</b>	<b>148</b>	<b>18.9</b>	<b>176</b>	<b>148</b>	<b>18.9</b>

**SALES TREND**  
Contracts Ratified Per Month



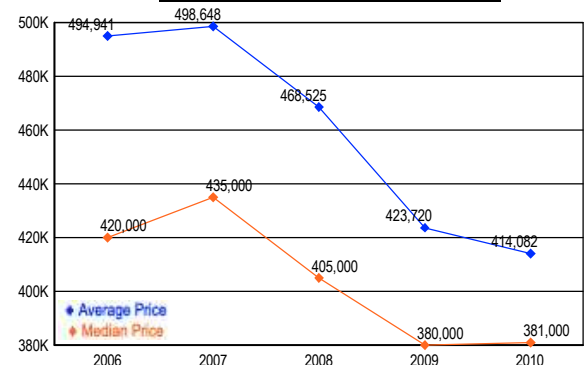
**MARKET BY PRICE RANGE**



### SETTLEMENTS

Price Range	New This Month			Year-to-Date		
	2010	2009	% Change	2010	2009	% Change
0 - 149,999	0	0	0.0	0	0	0.0
150,000 - 199,999	5	4	25.0	5	4	25.0
200,000 - 299,999	26	31	-16.1	26	31	-16.1
300,000 - 399,999	32	23	39.1	32	23	39.1
400,000 - 499,999	17	12	41.7	17	12	41.7
500,000 - 599,999	16	10	60.0	16	10	60.0
600,000 - 699,999	12	3	300.0	12	3	300.0
700,000 - 799,999	5	4	25.0	5	4	25.0
800,000 - 899,999	0	1	-100.0	0	1	-100.0
900,000 - 999,999	1	2	-50.0	1	2	-50.0
1,000,000 - 1,249,999	0	1	-100.0	0	1	-100.0
1,250,000 - 1,499,999	0	0	0.0	0	0	0.0
1,500,000 +	0	0	0.0	0	0	0.0
<b>TOTALS</b>	<b>114</b>	<b>91</b>	<b>25.3</b>	<b>114</b>	<b>91</b>	<b>25.3</b>

**AVERAGE & MEDIAN PRICE**



DATA SOURCE: Metropolitan Regional Information Systems, Inc. (MRIS)

NOTES: Properties not listed through this Multiple Listing Service are not reflected. The term "sales" represents ratified purchase contracts. Current year information is preliminary and subject to revision. Current year- to- date contract information may not equal the sum of the monthly contract totals reported in