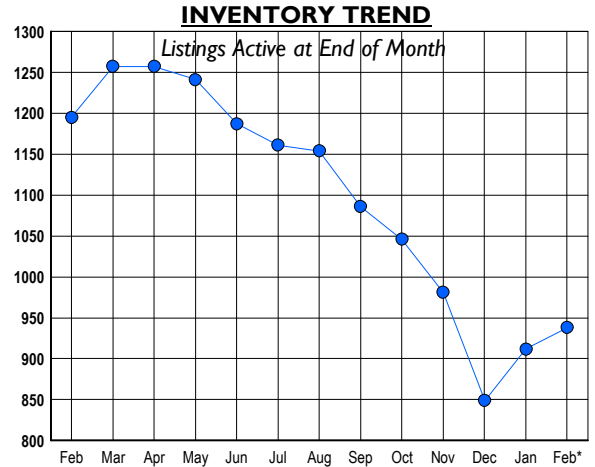


# HOWARD COUNTY Residential Market Report

# HOUSING REPORT Single Family Homes February 2010

## LISTINGS

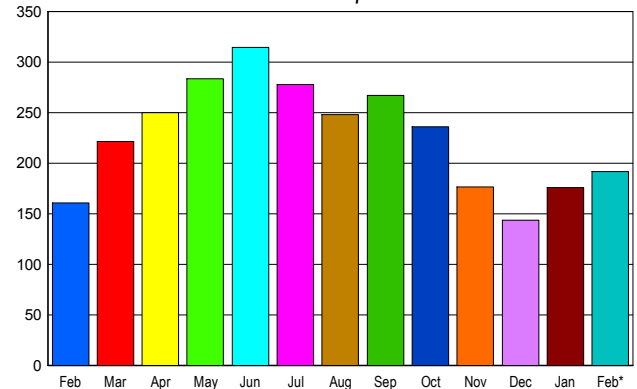
Prices Range	New This Month			Total Actives		
	2010	2009	% Change	2010	2009	% Change
0 - 149,999	2	0	200.0	12	3	300.0
150,000 - 199,999	1	7	-85.7	17	19	-10.5
200,000 - 299,999	47	48	-2.1	112	189	-40.7
300,000 - 399,999	60	68	-11.8	155	212	-26.9
400,000 - 499,999	50	47	6.4	146	194	-24.7
500,000 - 599,999	30	39	-23.1	123	152	-19.1
600,000 - 699,999	18	32	-43.8	99	127	-22.0
700,000 - 799,999	21	20	5.0	76	77	-1.3
800,000 - 899,999	6	10	-40.0	45	45	0.0
900,000 - 999,999	13	13	0.0	56	62	-9.7
1,000,000 - 1,249,999	8	4	100.0	40	42	-4.8
1,250,000 - 1,499,999	12	8	50.0	29	41	-29.3
1,500,000 +	2	6	-66.7	28	32	-12.5
<b>TOTALS</b>	<b>270</b>	<b>302</b>	<b>-10.6</b>	<b>938</b>	<b>1195</b>	<b>-21.5</b>



## CONTRACTS

Price Range	New This Month			Year-To-Date		
	2010	2009	% Change	2010	2009	% Change
0 - 149,999	0	0	0.0	0	0	0.0
150,000 - 199,999	8	7	14.3	18	10	80.0
200,000 - 299,999	44	39	12.8	86	75	14.7
300,000 - 399,999	53	46	15.2	99	85	16.5
400,000 - 499,999	42	21	100.0	73	51	43.1
500,000 - 599,999	19	20	-5.0	37	43	-14.0
600,000 - 699,999	9	14	-35.7	25	21	19.0
700,000 - 799,999	6	3	100.0	12	7	71.4
800,000 - 899,999	4	4	0.0	6	5	20.0
900,000 - 999,999	4	1	300.0	7	1	600.0
1,000,000 - 1,249,999	3	3	0.0	4	5	-20.0
1,250,000 - 1,499,999	0	2	-100.0	1	5	-80.0
1,500,000 +	0	1	-100.0	2	1	100.0
<b>TOTALS</b>	<b>192</b>	<b>161</b>	<b>19.3</b>	<b>370</b>	<b>309</b>	<b>19.7</b>

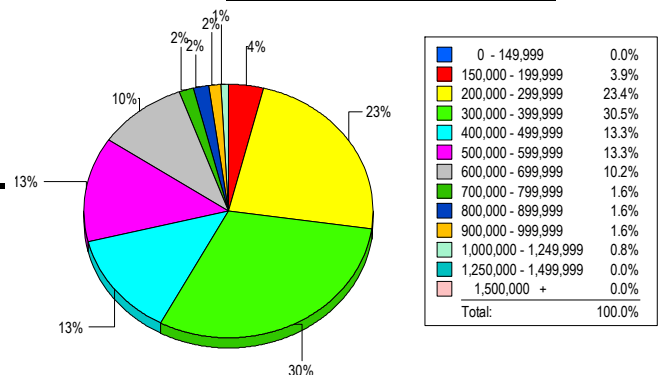
**SALES TREND**  
Contracts Ratified Per Month



## SETTLEMENTS

Price Range	New This Month			Year-to-Date		
	2010	2009	% Change	2010	2009	% Change
0 - 149,999	0	0	0.0	0	0	0.0
150,000 - 199,999	5	0	500.0	10	4	150.0
200,000 - 299,999	30	19	57.9	56	52	7.7
300,000 - 399,999	39	29	34.5	71	54	31.5
400,000 - 499,999	17	19	-10.5	35	31	12.9
500,000 - 599,999	17	13	30.8	34	23	47.8
600,000 - 699,999	13	7	85.7	26	10	160.0
700,000 - 799,999	2	3	-33.3	8	7	14.3
800,000 - 899,999	2	2	0.0	2	3	-33.3
900,000 - 999,999	2	1	100.0	3	3	0.0
1,000,000 - 1,249,999	1	3	-66.7	2	4	-50.0
1,250,000 - 1,499,999	0	1	-100.0	0	1	-100.0
1,500,000 +	0	0	0.0	0	0	0.0
<b>TOTALS</b>	<b>128</b>	<b>97</b>	<b>32.0</b>	<b>247</b>	<b>192</b>	<b>28.6</b>

**MARKET BY PRICE RANGE**



**AVERAGE & MEDIAN PRICE**



DATA SOURCE: Metropolitan Regional Information Systems, Inc. (MRIS)

NOTES: Properties not listed through this Multiple Listing Service are not reflected. The term "sales" represents ratified purchase contracts. Current year information is preliminary and subject to revision. Current year-to-date contract information may not equal the sum of the monthly contract totals reported in