

HOWARD COUNTY

Residential Market Report

HOUSING REPORT

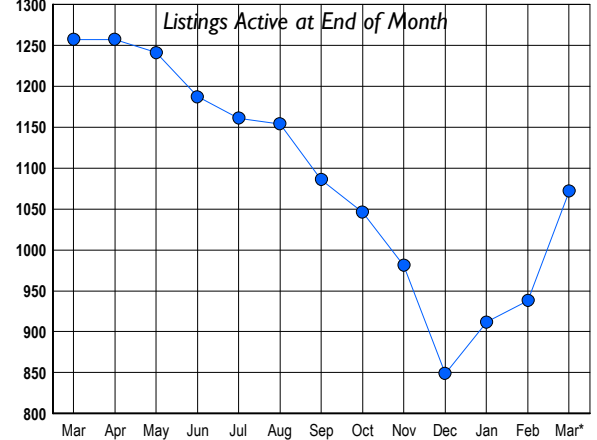
Single Family Homes

March 2010

LISTINGS

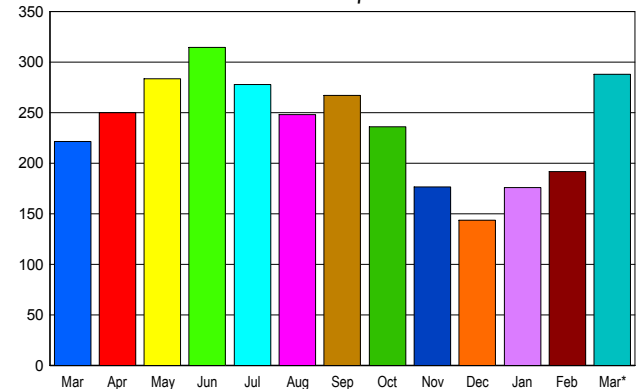
Prices Range	New This Month			Total Actives		
	2010	2009	% Change	2010	2009	% Change
0 - 149,999	1	2	-50.0	9	5	80.0
150,000 - 199,999	10	6	66.7	15	21	-28.6
200,000 - 299,999	76	55	38.2	121	178	-32.0
300,000 - 399,999	127	85	49.4	187	223	-16.1
400,000 - 499,999	107	61	75.4	185	185	0.0
500,000 - 599,999	56	71	-21.1	141	182	-22.5
600,000 - 699,999	55	48	14.6	125	138	-9.4
700,000 - 799,999	24	25	-4.0	88	90	-2.2
800,000 - 899,999	10	17	-41.2	48	56	-14.3
900,000 - 999,999	14	16	-12.5	48	60	-20.0
1,000,000 - 1,249,999	11	14	-21.4	40	46	-13.0
1,250,000 - 1,499,999	6	10	-40.0	32	40	-20.0
1,500,000 +	7	8	-12.5	33	33	0.0
TOTALS	504	418	20.6	1072	1257	-14.7

INVENTORY TREND



SALES TREND

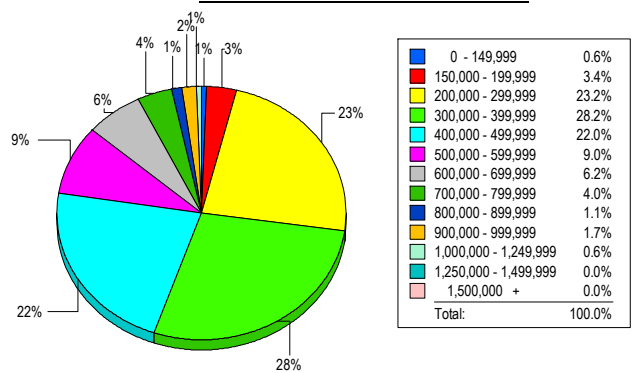
Contracts Ratified Per Month



CONTRACTS

Price Range	New This Month			Year-To-Date		
	2010	2009	% Change	2010	2009	% Change
0 - 149,999	3	0	300.0	3	0	300.0
150,000 - 199,999	16	4	300.0	30	12	150.0
200,000 - 299,999	63	55	14.5	141	125	12.8
300,000 - 399,999	85	58	46.6	181	144	25.7
400,000 - 499,999	45	40	12.5	113	88	28.4
500,000 - 599,999	27	36	-25.0	63	77	-18.2
600,000 - 699,999	23	14	64.3	47	34	38.2
700,000 - 799,999	13	6	116.7	24	12	100.0
800,000 - 899,999	4	1	300.0	9	6	50.0
900,000 - 999,999	4	3	33.3	11	4	175.0
1,000,000 - 1,249,999	4	1	300.0	8	6	33.3
1,250,000 - 1,499,999	0	3	-100.0	1	8	-87.5
1,500,000 +	1	1	0.0	3	2	50.0
TOTALS	288	222	29.7	634	518	22.4

MARKET BY PRICE RANGE



SETTLEMENTS

Price Range	New This Month			Year-to-Date		
	2010	2009	% Change	2010	2009	% Change
0 - 149,999	1	1	0.0	1	1	0.0
150,000 - 199,999	6	7	-14.3	18	12	50.0
200,000 - 299,999	41	34	20.6	98	88	11.4
300,000 - 399,999	50	41	22.0	124	96	29.2
400,000 - 499,999	39	26	50.0	76	58	31.0
500,000 - 599,999	16	16	0.0	50	39	28.2
600,000 - 699,999	11	7	57.1	37	19	94.7
700,000 - 799,999	7	2	250.0	16	9	77.8
800,000 - 899,999	2	0	200.0	4	3	33.3
900,000 - 999,999	3	1	200.0	6	4	50.0
1,000,000 - 1,249,999	1	2	-50.0	3	7	-57.1
1,250,000 - 1,499,999	0	0	0.0	0	2	-100.0
1,500,000 +	0	0	0.0	0	0	0.0
TOTALS	177	137	29.2	433	338	28.1

AVERAGE & MEDIAN PRICE



DATA SOURCE: Metropolitan Regional Information Systems, Inc. (MRIS)

NOTES: Properties not listed through this Multiple Listing Service are not reflected. The term "sales" represents ratified purchase contracts. Current year information is preliminary and subject to revision. Current year- to- date contract information may not equal the sum of the monthly contract totals reported in