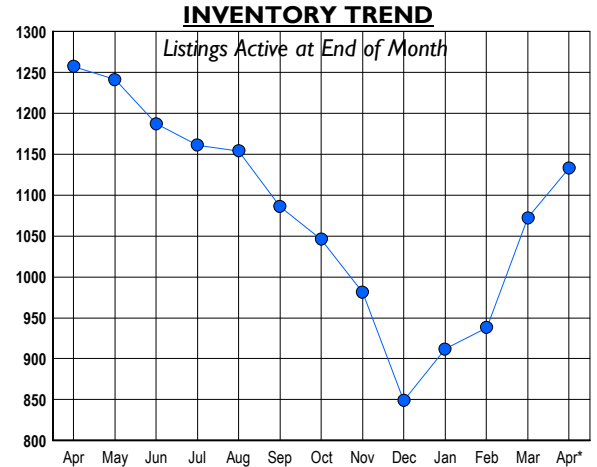


HOWARD COUNTY Residential Market Report

HOUSING REPORT Single Family Homes April 2010

LISTINGS

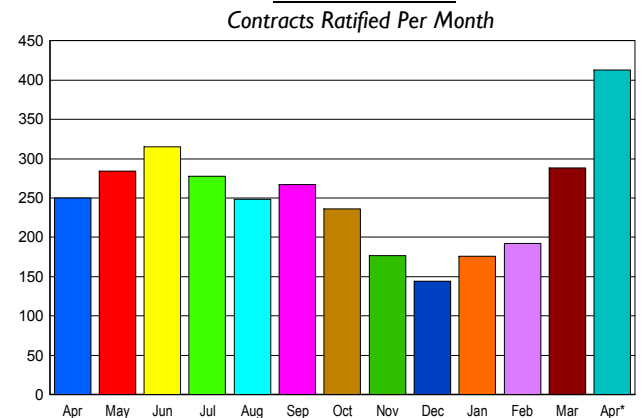
Prices Range	New This Month			Total Actives		
	2010	2009	% Change	2010	2009	% Change
0 - 149,999	4	1	300.0	7	9	-22.2
150,000 - 199,999	13	4	225.0	15	17	-11.8
200,000 - 299,999	93	79	17.7	137	175	-21.7
300,000 - 399,999	160	101	58.4	217	224	-3.1
400,000 - 499,999	101	52	94.2	158	173	-8.7
500,000 - 599,999	68	61	11.5	153	184	-16.8
600,000 - 699,999	51	54	-5.6	134	149	-10.1
700,000 - 799,999	44	20	120.0	94	88	6.8
800,000 - 899,999	21	14	50.0	47	57	-17.5
900,000 - 999,999	24	9	166.7	55	57	-3.5
1,000,000 - 1,249,999	22	9	144.4	49	43	14.0
1,250,000 - 1,499,999	15	8	87.5	33	42	-21.4
1,500,000 +	7	8	-12.5	34	39	-12.8
TOTALS	623	420	48.3	1133	1257	-9.9



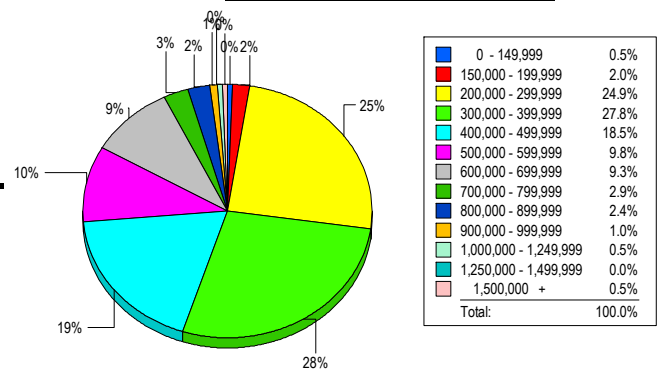
CONTRACTS

Price Range	New This Month			Year-To-Date		
	2010	2009	% Change	2010	2009	% Change
0 - 149,999	7	0	700.0	10	0	1,000.0
150,000 - 199,999	14	10	40.0	42	22	90.9
200,000 - 299,999	81	62	30.6	211	186	13.4
300,000 - 399,999	113	66	71.2	285	209	36.4
400,000 - 499,999	89	44	102.3	202	130	55.4
500,000 - 599,999	45	27	66.7	106	103	2.9
600,000 - 699,999	33	19	73.7	80	54	48.1
700,000 - 799,999	15	12	25.0	38	25	52.0
800,000 - 899,999	7	2	250.0	16	8	100.0
900,000 - 999,999	2	2	0.0	14	6	133.3
1,000,000 - 1,249,999	3	4	-25.0	9	10	-10.0
1,250,000 - 1,499,999	2	2	0.0	3	10	-70.0
1,500,000 +	2	0	200.0	6	2	200.0
TOTALS	413	250	65.2	1022	765	33.6

SALES TREND



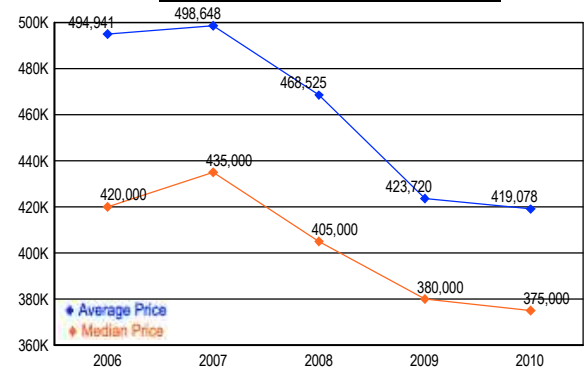
MARKET BY PRICE RANGE



SETTLEMENTS

Price Range	New This Month			Year-to-Date		
	2010	2009	% Change	2010	2009	% Change
0 - 149,999	1	0	100.0	2	1	100.0
150,000 - 199,999	4	2	100.0	23	14	64.3
200,000 - 299,999	51	40	27.5	154	130	18.5
300,000 - 399,999	57	41	39.0	183	139	31.7
400,000 - 499,999	38	30	26.7	117	90	30.0
500,000 - 599,999	20	28	-28.6	72	68	5.9
600,000 - 699,999	19	15	26.7	56	35	60.0
700,000 - 799,999	6	2	200.0	23	11	109.1
800,000 - 899,999	5	2	150.0	9	5	80.0
900,000 - 999,999	2	0	200.0	11	4	175.0
1,000,000 - 1,249,999	1	1	0.0	4	8	-50.0
1,250,000 - 1,499,999	0	1	-100.0	0	3	-100.0
1,500,000 +	1	1	0.0	1	1	0.0
TOTALS	205	163	25.8	655	509	28.7

AVERAGE & MEDIAN PRICE



DATA SOURCE: Metropolitan Regional Information Systems, Inc. (MRIS)

NOTES: Properties not listed through this Multiple Listing Service are not reflected. The term "sales" represents ratified purchase contracts. Current year information is preliminary and subject to revision. Current year-to-date contract information may not equal the sum of the monthly contract totals reported in