

HOWARD COUNTY Residential Market Report

HOUSING REPORT Single Family Homes June 2010

LISTINGS

Prices Range	New This Month			Total Actives		
	2010	2009	% Change	2010	2009	% Change
0 - 149,999	3	1	200.0	10	8	25.0
150,000 - 199,999	8	5	60.0	22	14	57.1
200,000 - 299,999	55	57	-3.5	179	132	35.6
300,000 - 399,999	113	95	18.9	258	210	22.9
400,000 - 499,999	66	75	-12.0	186	177	5.1
500,000 - 599,999	62	40	55.0	185	158	17.1
600,000 - 699,999	64	44	45.5	145	155	-6.5
700,000 - 799,999	30	26	15.4	103	91	13.2
800,000 - 899,999	15	19	-21.1	51	65	-21.5
900,000 - 999,999	11	7	57.1	61	50	22.0
1,000,000 - 1,249,999	7	9	-22.2	60	41	46.3
1,250,000 - 1,499,999	9	4	125.0	41	45	-8.9
1,500,000 +	6	7	-14.3	36	41	-12.2
TOTALS	449	389	15.4	1337	1187	12.6

CONTRACTS

Price Range	New This Month			Year-To-Date		
	2010	2009	% Change	2010	2009	% Change
0 - 149,999	0	0	0.0	11	2	450.0
150,000 - 199,999	10	13	-23.1	49	41	19.5
200,000 - 299,999	40	73	-45.2	278	296	-6.1
300,000 - 399,999	56	82	-31.7	386	367	5.2
400,000 - 499,999	43	56	-23.2	266	229	16.2
500,000 - 599,999	33	39	-15.4	164	183	-10.4
600,000 - 699,999	32	28	14.3	128	115	11.3
700,000 - 799,999	11	13	-15.4	62	48	29.2
800,000 - 899,999	4	6	-33.3	22	16	37.5
900,000 - 999,999	2	2	0.0	18	9	100.0
1,000,000 - 1,249,999	2	2	0.0	13	11	18.2
1,250,000 - 1,499,999	2	0	200.0	5	9	-44.4
1,500,000 +	0	1	-100.0	6	3	100.0
TOTALS	235	315	-25.4	1408	1329	5.9

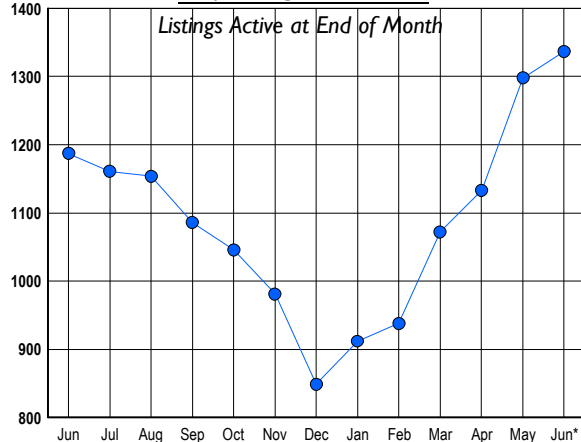
SETTLEMENTS

Price Range	New This Month			Year-to-Date		
	2010	2009	% Change	2010	2009	% Change
0 - 149,999	2	1	100.0	10	3	233.3
150,000 - 199,999	6	5	20.0	39	27	44.4
200,000 - 299,999	47	39	20.5	258	216	19.4
300,000 - 399,999	73	76	-3.9	342	277	23.5
400,000 - 499,999	53	42	26.2	220	173	27.2
500,000 - 599,999	42	38	10.5	151	131	15.3
600,000 - 699,999	26	20	30.0	110	70	57.1
700,000 - 799,999	13	11	18.2	48	25	92.0
800,000 - 899,999	3	1	200.0	15	7	114.3
900,000 - 999,999	4	0	400.0	17	5	240.0
1,000,000 - 1,249,999	3	4	-25.0	9	13	-30.8
1,250,000 - 1,499,999	3	0	300.0	3	3	0.0
1,500,000 +	0	0	0.0	2	3	-33.3
TOTALS	275	237	16.0	1224	953	28.4

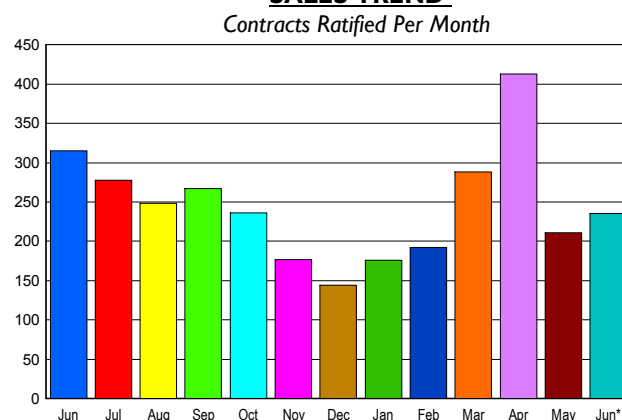
DATA SOURCE: Metropolitan Regional Information Systems, Inc. (MRIS)

NOTES: Properties not listed through this Multiple Listing Service are not reflected. The term "sales" represents ratified purchase contracts. Current year information is preliminary and subject to revision. Current year- to- date contract information may not equal the sum of the monthly contract totals reported in

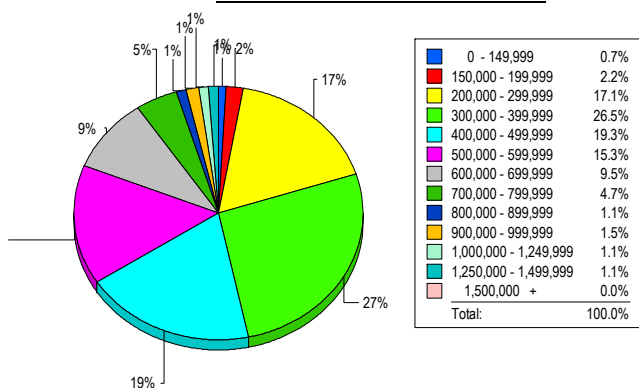
INVENTORY TREND



SALES TREND



MARKET BY PRICE RANGE



AVERAGE & MEDIAN PRICE

