

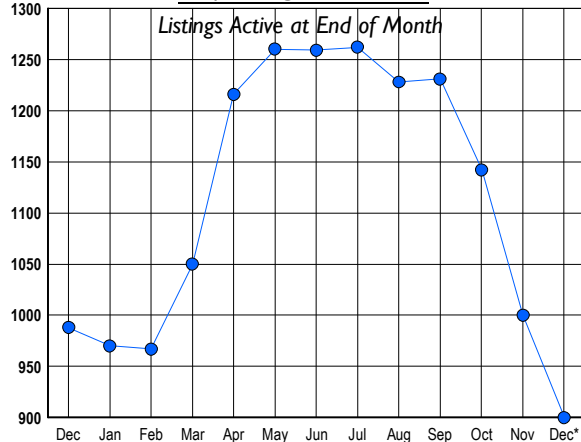
# HOWARD COUNTY Residential Market Report

# HOUSING REPORT Single Family Homes December 2011

## LISTINGS

Prices Range	New This Month			Total Actives		
	2011	2010	% Change	2011	2010	% Change
0 - 149,999	1	0	100.0	10	8	25.0
150,000 - 199,999	5	4	25.0	36	34	5.9
200,000 - 299,999	33	40	-17.5	148	178	-16.9
300,000 - 399,999	39	25	56.0	157	178	-11.8
400,000 - 499,999	28	28	0.0	146	134	9.0
500,000 - 599,999	33	21	57.1	100	103	-2.9
600,000 - 699,999	21	16	31.3	83	99	-16.2
700,000 - 799,999	9	16	-43.8	60	69	-13.0
800,000 - 899,999	8	9	-11.1	42	43	-2.3
900,000 - 999,999	7	9	-22.2	36	39	-7.7
1,000,000 - 1,249,999	6	16	-62.5	39	49	-20.4
1,250,000 - 1,499,999	3	11	-72.7	19	28	-32.1
1,500,000 +	1	0	100.0	24	26	-7.7
<b>TOTALS</b>	<b>194</b>	<b>195</b>	<b>-0.5</b>	<b>900</b>	<b>988</b>	<b>-8.9</b>

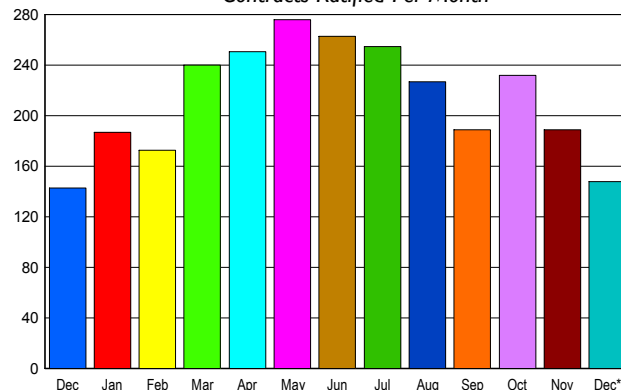
## INVENTORY TREND



## CONTRACTS

Price Range	New This Month			Year-To-Date		
	2011	2010	% Change	2011	2010	% Change
0 - 149,999	2	2	0.0	18	17	5.9
150,000 - 199,999	7	4	75.0	102	81	25.9
200,000 - 299,999	42	32	31.3	540	483	11.8
300,000 - 399,999	42	36	16.7	555	627	-11.5
400,000 - 499,999	20	26	-23.1	399	458	-12.9
500,000 - 599,999	14	20	-30.0	297	336	-11.6
600,000 - 699,999	8	11	-27.3	206	227	-9.3
700,000 - 799,999	6	4	50.0	107	101	5.9
800,000 - 899,999	4	1	300.0	51	33	54.5
900,000 - 999,999	0	1	-100.0	16	30	-46.7
1,000,000 - 1,249,999	3	4	-25.0	24	24	0.0
1,250,000 - 1,499,999	0	1	-100.0	7	12	-41.7
1,500,000 +	0	1	-100.0	11	8	37.5
<b>TOTALS</b>	<b>148</b>	<b>143</b>	<b>3.5</b>	<b>2333</b>	<b>2437</b>	<b>-4.3</b>

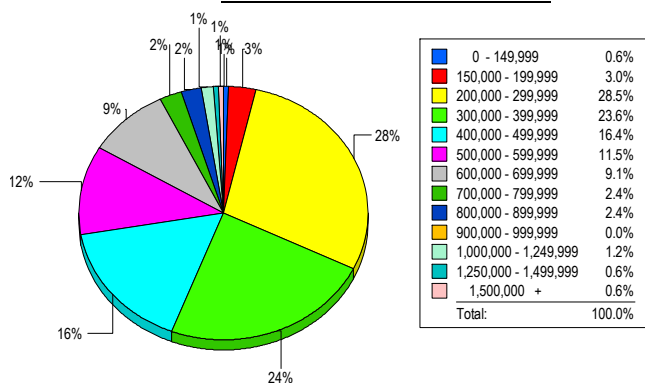
## SALES TREND



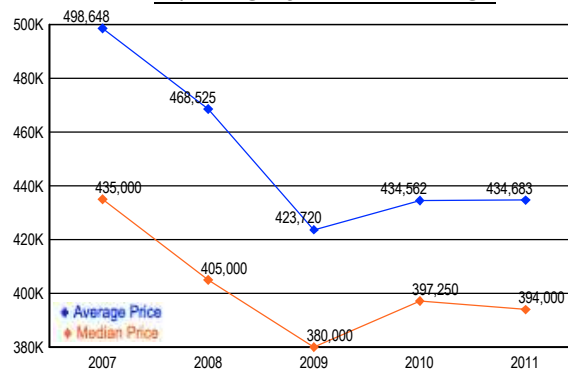
## SETTLEMENTS

Price Range	New This Month			Year-to-Date		
	2011	2010	% Change	2011	2010	% Change
0 - 149,999	1	2	-50.0	16	17	-5.9
150,000 - 199,999	5	8	-37.5	70	79	-11.4
200,000 - 299,999	47	28	67.9	517	479	7.9
300,000 - 399,999	39	30	30.0	556	617	-9.9
400,000 - 499,999	27	43	-37.2	390	436	-10.6
500,000 - 599,999	19	30	-36.7	305	331	-7.9
600,000 - 699,999	15	13	15.4	211	224	-5.8
700,000 - 799,999	4	7	-42.9	76	89	-14.6
800,000 - 899,999	4	2	100.0	44	32	37.5
900,000 - 999,999	0	2	-100.0	19	27	-29.6
1,000,000 - 1,249,999	2	0	200.0	24	16	50.0
1,250,000 - 1,499,999	1	1	0.0	7	7	0.0
1,500,000 +	1	0	100.0	8	6	33.3
<b>TOTALS</b>	<b>165</b>	<b>166</b>	<b>-0.6</b>	<b>2243</b>	<b>2360</b>	<b>-5.0</b>

## MARKET BY PRICE RANGE



## AVERAGE & MEDIAN PRICE



DATA SOURCE: Metropolitan Regional Information Systems, Inc. (MRIS)

NOTES: Properties not listed through this Multiple Listing Service are not reflected. The term "sales" represents ratified purchase contracts. Current year information is preliminary and subject to revision. Current year-to-date contract information may not equal the sum of the monthly contract totals reported in